

Distr.
LIMITED

E/ESCWA/SDD/2007/Technical Material.2
13 February 2007
ARABIC
ORIGINAL: ENGLISH

()

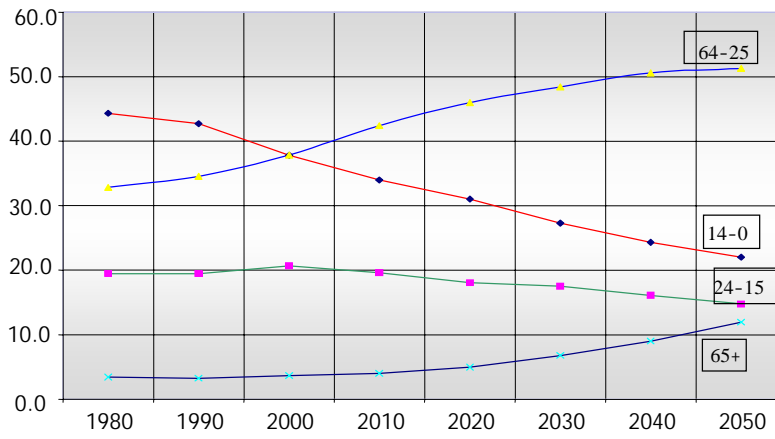
2007

07-0098

(14-0) (64-25)
 (1)(65)

2050-1980

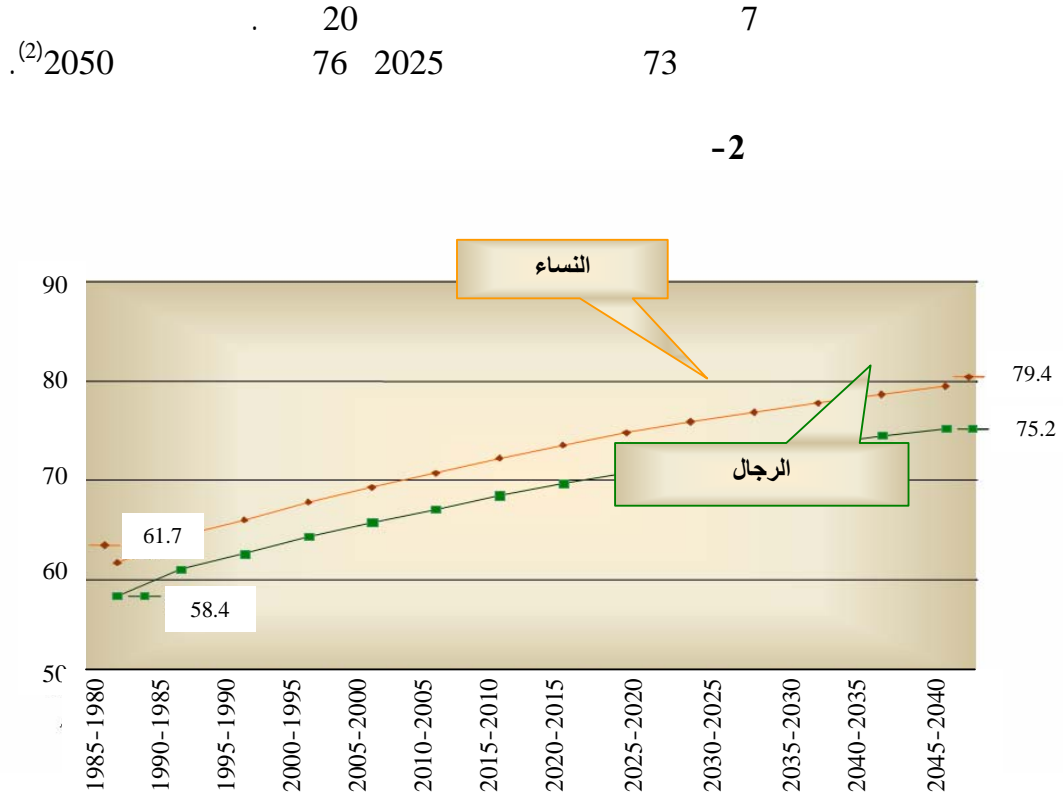
-1



65
 2000 10.4 1980 5.7
 .2020 21.3 2010 14

1985-1980
 61.3 58

(1)
 / .2005



2005-2000

65

2000

6.53

3.99

3.24

65

3.3

5.63

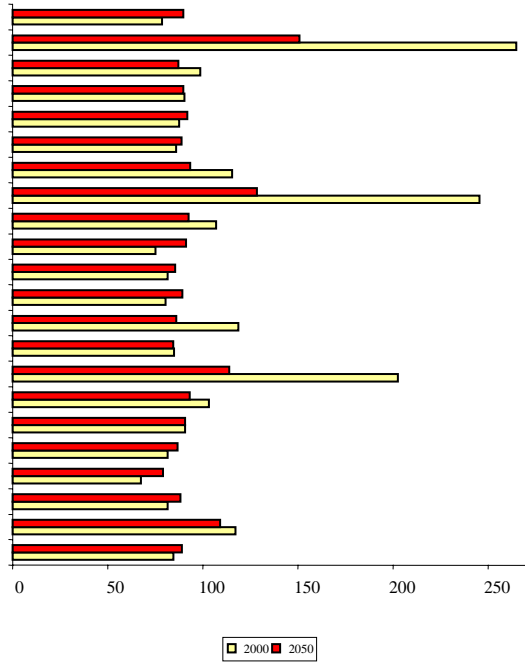
(2)2050

(3)2025

ESCWA, "Population and Development: The demographic profile of the Arab countries" (2) (ESCWA/SDD/2003/BOOKLET.2).

ESCWA, "Demographic Trends of Ageing in the Arab Countries" (E/ESCWA/SD/2002/WG.1-1/3), p. 26 (3)

2025 2000



13 2025)

8

(4) .2050

5

(5)

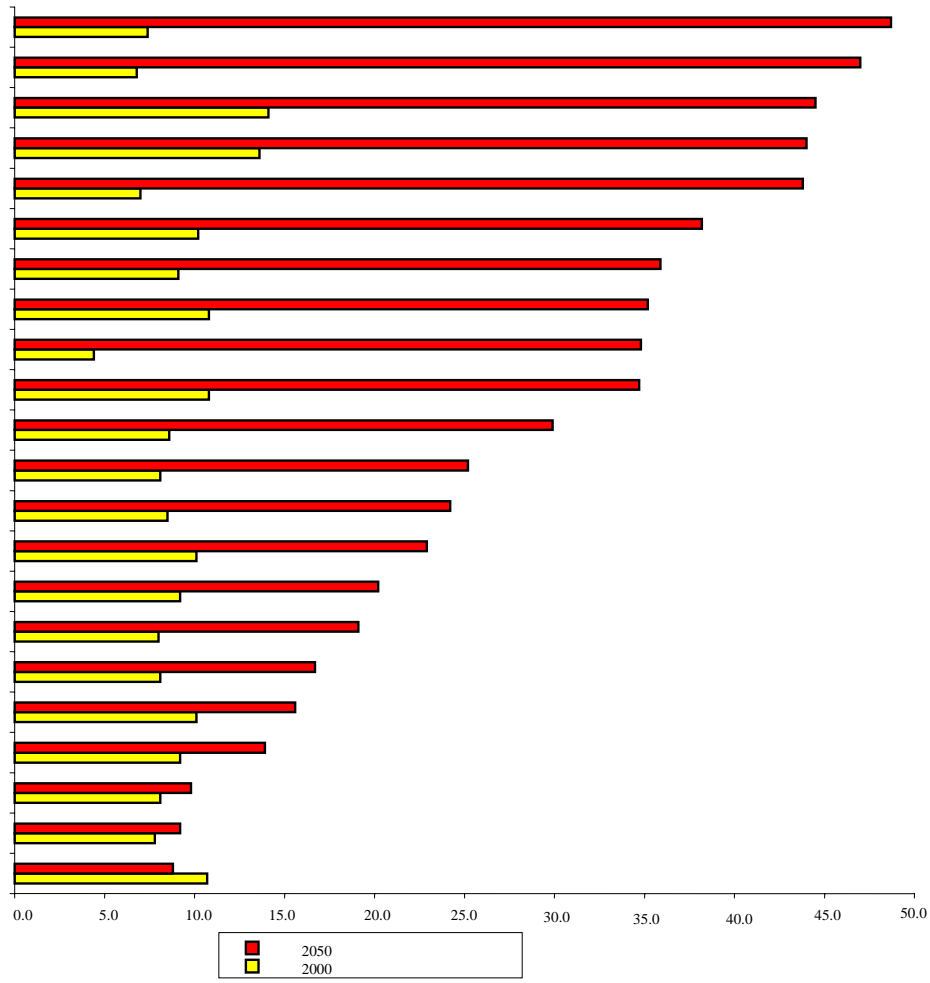
ESCWA, "Ageing in the Arab countries: regional () 11 variations, policies and programmes" (E/ESCWA/SDD/2004/WG.1/2), p. 17.

.ESCWA, "Demographic trends of ageing in the Arab countries" (E/ESCWA/SD/2002/WG.1-1/3), p. 11 (5)

2050 2000

-4

()



2050

130.4

137.2

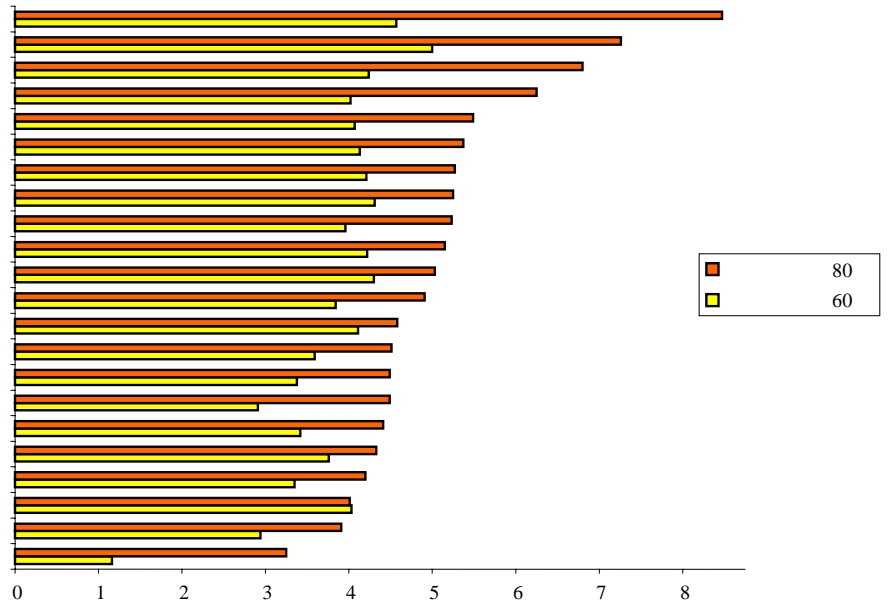
143.7

145.2
(6) 125.6

(6)

ESCWA, "Ageing in the Arab countries: regional variations, policies and programmes" (E/ESCWA/SDD/2004/WG.1/2), p. 19.

2.6
 .2050 1.67 2025 1.99 2000
 12 5-4 65
 2050-2000
 11 5 (80)
 (7) 7
 2050-2000 -5
 ()



:1994

" () ()

() 15 3 (7)

(8)»

12-8

)

:

(2002 /

•

" () :

" () "

(9)»

:2012

(10)

()

() :

()

() :

()

()

" "

(11)»

:

•

(8)

.40 2004 /

(9)

.43 32 2003 /

(10)

2012

(2002 / 8-5)

.28

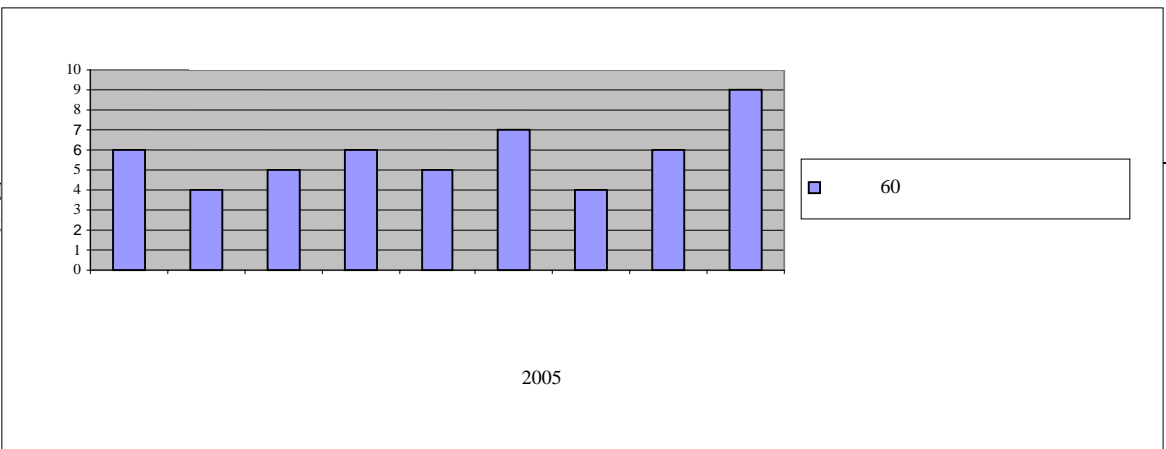
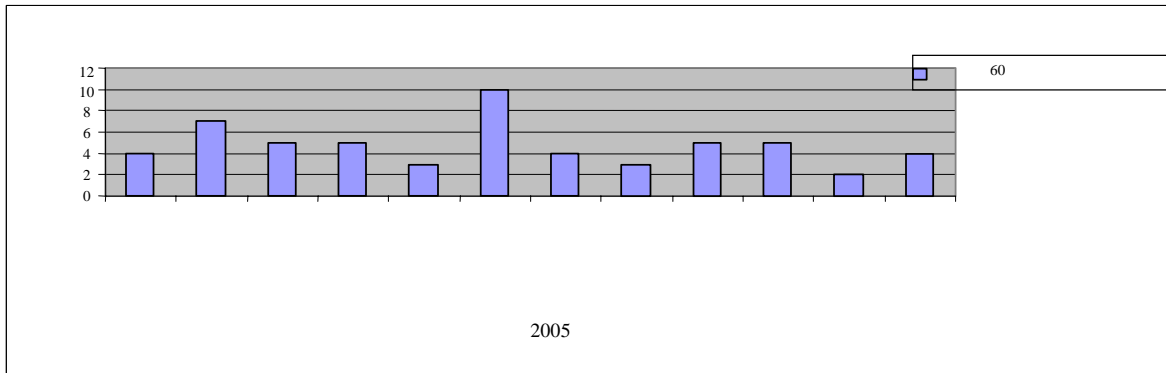
(E/ESCWA/SD/2002/WG.1/8) 2012

(11)

(World Population Policies 2005) "2005

(12)" "

-6



:

2012

•

•

•

:

()

()

()

()

(•)

:

•

•

/

•

•

:

•

•

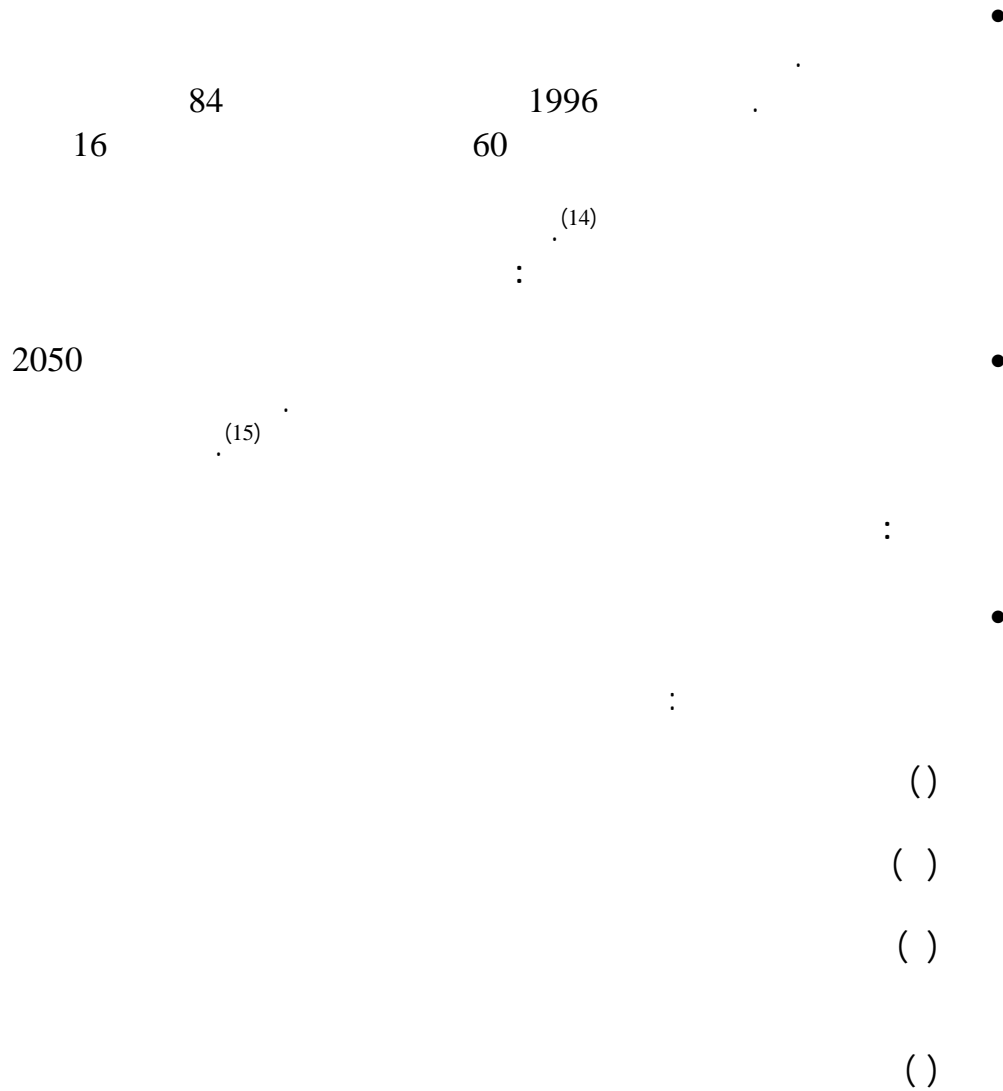
:

•

:

()

()



.ESCWA, "Demographic trends of ageing in the Arab countries" (E/ESCWA/SD/2002/WG.1-1/3), p. 14 (14)

ESCWA, "Ageing in the Arab countries: regional variations, policies and programmes" (15)
(E/ESCWA/SDD/2004/WG.1/2), pp. 25 and 27.