

Employment-Based Retirement Plan Participation: Geographic Differences and Trends, 2006

By Craig Copeland, EBRI

- **Latest Census data:** This *Issue Brief* closely examines the level of participation by workers in public- and private-sector employment-based pension or retirement plans, based on the U.S. Census Bureau's March 2007 Current Population Survey (CPS), the most recent data currently available.
- **Sponsorship rate:** About 56 percent of all working-age (21–64) wage and salary employees work for an employer or union that sponsors a retirement plan. Among *full-time, full-year wage and salary workers* ages 21–64 (those with the strongest connection to the work force), just over 60 percent worked for an employer or union that sponsors a plan.
- **Participation level:** Among working age *full-time, full-year wage and salary workers*, 53 percent participated in a retirement plan.
 - ▶ **Trend:** This is down from approximately 55 percent in 2004. Participation trends increased significantly when the labor market was tight in the late 1990s, and decreased when unemployment went up in 2001 and 2002. With a more stable job market in 2003 and 2004, the participation trend flattened out. But even with the stable job market in 2005 and 2006, the retirement plan participation level declined; therefore, it appears a much tighter job market may be needed to push participation trends upward.
 - ▶ **Age:** Participation increases with age (60.1 percent for wage and salary workers age 54–64, compared with 29.3 percent for those 21–24).
 - ▶ **Gender:** Among *all* workers, men had a higher participation level than women, but among *full-time, full-year workers*, women had a higher percentage participating than men (54.4 percent for women, compared with 51.4 percent for men). Female workers' lower probability of participation in the aggregate results from their overall lower earnings and/or lower rates of full-time work in comparison with males.
 - ▶ **Race:** Hispanic wage and salary workers were significantly less likely than both white and black workers to participate in a retirement plan. The gap between the percentages of black and white plan participants that exists overall narrows when compared across earnings levels; among workers earning \$30,000–\$39,999, black and white workers had a virtually identical level of participation. A key factor in Hispanic participation levels is whether the worker is native-born or nonnative-born; native-born Hispanics have participation levels closer to other minority groups.
- **Geographic differences:** Wage and salary workers in the South, West, and Southwest had the lowest participation levels (Florida had the lowest percentage, at 40 percent) while the upper Midwest and Northeast had the highest levels (North Dakota had the highest participation level, at just over 64 percent).

Craig Copeland is senior research associate at the Employee Benefit Research Institute (EBRI). This *Issue Brief* was written with assistance from the Institute’s research and editorial staffs. Any views expressed in this report are those of the author and should not be ascribed to the officers, trustees, or other sponsors of EBRI, EBRI-ERF, or their staffs. Neither EBRI nor EBRI-ERF lobbies or takes positions on specific policy proposals. EBRI invites comment on this research.

Note: The electronic version of this publication was created using version 6.0 of Adobe® Acrobat®. Those having trouble opening the PDF document will need to upgrade their computer to the current version of Adobe® Reader®, which can be downloaded for free at www.adobe.com/products/acrobat/readstep2.html

Table of Contents

Introduction.....	4
Retirement Plan Types.....	4
Data.....	6
2006 Participation Levels	6
Worker Characteristics	7
Employer Characteristics.....	10
A Closer Examination.....	10
Geographic Differences	13
Trends	16
Trends in the Percentage Participating.....	16
Trends Across Worker Characteristics	19
Trends Across Employer Characteristics.....	22
Conclusion	22
References.....	26
Endnotes	27

Figures

Figure 1, Percentage of Various Work Forces Who Worked for an Employer That Sponsored a Retirement Plan and the Percentage Who Participated in a Plan, 2006.....	7
Figure 2, Percentage of Various Work Forces Who Worked for an Employer That Sponsored a Retirement Plan and the Percentage Who Participated in a Plan, by Various Characteristics, 2006	8
Figure 3, Percentage of Wage and Salary Workers Ages 21–64 Who Participated in an Employment-Based Retirement Plan, by Work Status and Gender, 2006	11
Figure 4, Percentage of Wage and Salary Workers Ages 21–64 Who Participated in an Employment-Based Retirement Plan, by Annual Earnings and Gender, 2006	11
Figure 5, Percentage of Wage and Salary Workers Ages 21–64 Who Participated in an Employment-Based Retirement Plan, by Annual Earnings and Race/Ethnicity, 2006	12
Figure 6, Percentage of Wage and Salary Workers Ages 21–64 Who Participated in an Employment-Based Retirement Plan, by Firm Size (Number of Employees) and Race/Ethnicity, 2006.....	12
Figure 7, Percentage of Wage and Salary Workers Ages 21–64 Who Participated in an Employment-Based Retirement Plan, by Age and Race/Ethnicity, 2006.....	14

Figure 8, Percentage of Wage and Salary Workers Ages 21–64 Who Participated in an Employment-Based Retirement Plan, by Race/Ethnicity With Hispanic Detail and Annual Earnings, 2006	14
Figure 9, Percentage of Wage and Salary Workers Ages 21–64 Who Participated in an Employment-Based Retirement Plan, by Age and Employer Size (Number of Employees), 2006.....	15
Figure 10, Percentage of Wage and Salary Workers Ages 21–64 Who Participated in an Employment-Based Retirement Plan, by Annual Earnings and Employer Size, 2006	15
Figure 11, Percentage of Wage and Salary Workers Ages 21–64 Who Participated in an Employment-Based Retirement Plan, by Annual Earnings and Educational Attainment, 2006.....	17
Figure 12, Percentage of Wage and Salary Workers Ages 21–64 Who Participated in an Employment-Based Retirement Plan, by Age and Income, 2006	17
Figure 13, Percentage of Wage and Salary Workers Ages 21–64 Who Participated in an Employment-Based Retirement Plan, by Health Insurance Status, 2006.....	18
Figure 14, Percentage of Wage and Salary Workers Ages 55–64 Participating in an Employment-Based Retirement Plan, by Self-Reported Health Status, 2006.....	18
Figure 15, Percentage of Various Work Forces Who Participated in an Employment-Based Retirement Plan, by State, 2006.....	20
Figure 16, Percentage of Various Work Forces Who Participated in an Employment-Based Retirement Plan, by Consolidated Statistical Area (CSA), 2006	21
Figure 17, Percentage of Various Work Forces Who Worked for an Employer That Sponsored a Retirement Plan and the Percentage Who Participated in an Employment-Based Retirement Plan, 1987–2006.....	23
Figure 18, Percentage of Various Work Forces Who Participated in an Employment-Based Retirement Plan, 1987–2006.....	30
Figure 19, Percentage of Wage and Salary Workers Ages 21–64 Who Participated in an Employment-Based Retirement Plan, by Age, 1987–2006.....	30
Figure 20, Percentage of Wage and Salary Workers Ages 21–64 Who Participated in an Employment-Based Retirement Plan, by Gender, 1987–2006.....	31
Figure 21, Percentage of Wage and Salary Workers Ages 21–64 Who Participated in an Employment-Based Retirement Plan, by Race/Ethnicity, 1987–2006.....	31
Figure 22, Percentage of Wage and Salary Workers Ages 21–64 Who Participated in an Employment-Based Retirement Plan, by Educational Level, 1987–2006	32
Figure 23, Percentage of Wage and Salary Workers Ages 21–64 Who Participated in an Employment-Based Retirement Plan, by Annual Earnings (2006 \$s), 1987–2006	32
Figure 24, Percentage of Wage and Salary Workers Ages 21–64 Who Participated in an Employment-Based Retirement Plan, by Work Status, 1987–2006.....	33
Figure 25, Percentage of Wage and Salary Workers Ages 21–64 Who Participated in an Employment-Based Retirement Plan, by Workers' Employer Size, 1987–2006	33
Figure 26, Percentage of Wage and Salary Workers Ages 21–64 Who Participated in an Employment-Based Retirement Plan, by Industry/Sector, 2002–2006.....	34

Introduction

The financing of retirement is becoming an increasingly vital topic in the United States, as the post-World War II baby-boom generation is rapidly approaching the traditional retirement age of 65. This wave of adults born between 1946–1964 totals 77 million people, and as they reach their retirement years they will greatly change the demographics of the nation: The sharp rise in the percentage of the elderly population will make it much more difficult for active workers to support programs such as Medicare and Social Security, which are designed to protect the elderly from the worst effects of old age (deteriorating health and loss of income). Since current tax revenues are projected to be insufficient to support these programs at their existing levels, some changes are likely to occur that could result in an increase in the retirement benefit eligibility age, higher taxes, or cutbacks in benefits for all retirees or certain types of retirees (such as wealthy individuals).

Consequently, if the near elderly (those ages 55–64) hope to maintain their preretirement standards of living, they will need other sources of income in retirement to supplement their Social Security benefits, as Social Security was not designed to match that standard. Today, a retiree beneficiary turning 65 can expect Social Security to replace between about 30 percent–50 percent of preretirement income, depending upon his or her earnings history (Board of Trustees of the Federal Old-Age and Survivors Insurance and Disability Insurance Trust Funds 2007).¹

For both current and future retirees, an important source of additional income in retirement is money from an employment-based retirement plan. Therefore, understanding the percentage of workers currently participating in an employment-based retirement plan provides critical insight into the likely future financial status of retirees.

In 2006, the percentage of workers participating in an employment-based retirement plan decreased. Specifically, the percentage of *all workers* participating in an employment-based retirement plan decreased from 40.9 percent in 2005 to 39.7 percent in 2006, while the percentage of *full-time, full-year wage and salary workers* ages 21–64 (those most likely to be offered a retirement plan at work) decreased from 54.8 percent in 2005 to 52.7 percent in 2006. The overall decline in participation was fueled by the decrease in full-time, full-year workers, but part-time workers' participation also declined in 2006.

This *Issue Brief* more closely examines this level of participation by workers in public- and private-sector employment-based pension or retirement plans, based on the U.S. Census Bureau's March 2007 Current Population Survey (CPS), the most recent data currently available. It begins with an overview of retirement plan types and participation in these types of plans. Next, it describes the data used in this study, along with their relative strengths and weaknesses. From these data, results on participation in employment-based retirement plans are analyzed for 2006 across various worker characteristics and those of their employers. The report then explores retirement plan participation across U.S. geographic regions, including a state-by-state comparison and a comparison of certain consolidated statistical areas (CSAs). In addition to the results for 2006, trends from 1987–2006 in employment-based retirement plan participation are presented across many of the same worker and employer characteristics as used for 2006. The report concludes with a discussion of this study's findings.

Retirement Plan Types

In general, there are two types of tax-favored retirement plan vehicles offered through employers and unions:

- Defined contribution (DC) plans, typified by the 401(k) retirement plan.
- Defined benefit (DB) plans, typified by the traditional pension plan.

These plans differ in a variety of ways, particularly in how benefits are determined and held, the assumption of investment risk, and the manner in which plan benefits are paid.

Benefit Determination: First, under a DC plan, employer contributions (if any) are based on a predetermined formula,² and, most frequently, all contributions (made by both employers and/or employees) are placed in individual accounts on behalf of each participant. In contrast, DB plans in the private sector typically are funded by the employer and do not require participants to contribute, and plan contributions are held in one trust on behalf of all participants, with these contributions subject to federal funding rules and regulations required to maintain the plan's tax-favored status. However, in the public sector, DB plans generally require employee contributions, but the contributions are usually pooled into a single fund along with funding from the government entity that sponsors the plan.

Investment risk: Next, who assumes the investment risk associated with plan assets is a key distinction between DC and DB plans. The overwhelming majority of individuals receiving DC plan benefits assume all of the investment risk in their own accounts; that is, employers do not guarantee a specific benefit level, but instead the benefit is determined by the contributions (employer and employee) to the individual's account and the investment returns within that account.³ In comparison, DB plan participants receive a certain benefit amount calculated from a specific formula, typically based on average salary and years of service, regardless of the investment performance of the plan assets. Thus, in general, in DC plans it is the *individual participants* who bear the investment risk, while in DB plans it is the *plan sponsor* (or for the public sector, the taxpayers in the jurisdiction of the sponsoring entity).

Benefit payout: A third difference between DC and DB plans traditionally has been the manner in which they generally pay benefits. DC plans usually pay out benefits in a lump sum—the entire accumulated benefits are paid out at one time. Consequently, the recipients are responsible for managing the money so that it lasts the rest of their lifetime, which would mean reducing or eliminating the (longevity) risk of outliving one's assets during their retirement. Alternatively, DB plans must offer life annuities (a set amount paid out regularly over time, typically monthly, for as long as the beneficiary lives), which, when chosen, eliminate the necessity of managing these assets during retirement. However, plan sponsors are allowed to “cash out” those participants who terminate employment and have a small accrued benefit, and a growing number of DB plan participants are also being offered a lump-sum distribution option.⁴

The term *pension plan* traditionally has been synonymous with a DB plan that uses a fixed annuity payment and not with a DC plan offering a lump-sum distribution. Although many individuals refer to a DC plan as a “pension” plan, many others still understand a pension to be an annuity payment at retirement. Thus, this discussion defines DB and DC plans as *retirement plans* to eliminate any confusion.

The increase in the number of DC plan participants relative to DB plan participants has been well documented. For example, the Department of Labor's Employee Benefits Security Administration's *Private Pension Plan Bulletin Historical Tables* (2007), which compiles data from the Internal Revenue Service Form 5500, shows that the number of active private-sector workers covered by a DB plan decreased from 30.1 million in 1980 to 20.6 million in 2004 (a decline of over 30 percent), while similar workers covered by a DC plan increased from 18.9 million in 1980 to 52.2 million in 2004 (an increase of more than 175 percent over the same period). Copeland (2005b), using the U.S. Census Bureau's May 1988 Current Population Survey Employee Benefit Supplement, and the Retirement and Pension Plan Coverage Topical Module to the 2001 Survey of Income and Program Participation (SIPP), found that the percentage of all civilian (public and private) nonagricultural wage and salary workers age 16 or older who considered their primary retirement to be a DC plan increased from 25.8 percent in 1988 to 57.7 percent in 2003. Another study by Copeland (2006), using the 1992 and the 2004 Survey of Consumer Finances (SCF), found that the percentage of families with at least one participant in a retirement plan and with only a DC plan increased from 37.6 percent in 1992 to 52.1 percent in 2004.

The reasons for this growth of DC plan participants, such as the perception of increased work force mobility and changes in the business and regulatory environments of plan sponsors, have also been well-documented.⁵ The consequences of these trends for retirees are significant, the most important being the necessity for individuals to accumulate sufficient assets in these accounts and then the necessity for individual retirees to manage the assets in retirement so as not to outlive them.^{6,7} However, these issues are outside the scope of this report, given that the data limitations used in this study allow for focusing only on the initial accumulation of retirement benefits through participation in an employment-based arrangement.

Data

While the analysis of employment-based retirement plan participation among plan types is important, the datasets that contain this information focus only on private-sector workers, are slow to be released, or are compiled from surveys taken only at three- or five-year intervals. The data cited above on the breakdown of plan types from SCF and SIPP illustrate this problem, as the latest available numbers are from 2003 and 2004, with the survey intervals being three years and five years, respectively.⁸ Furthermore, the official compilation of private-sector plan assets and participants by the U.S. Department of Labor from the Form 5500 data that all private-sector sponsors of pension or retirement plans must file with the Internal Revenue Service (IRS) is currently available only through 2004. Public-sector employers are not required to file these forms, making detailed data from those plans difficult to obtain even after a few years.

The one timely survey on employment-based retirement plan offering and participation by employees is the National Compensation Survey, conducted by the U.S. Department of Labor's Bureau of Labor Statistics (BLS), which only covers participation in employee benefit plans of private-sector workers. This survey finds, in March 2007, 51 percent of private-sector workers participated in an employment-based retirement plan—the same percentage as in March 2006—up from 50 percent in March of 2005. This survey also finds that 20 percent of private-sector workers participated in a defined benefit plan and 43 percent participated in a defined contribution plan (12 percent participated in both). The BLS is currently scheduled to release a benefits survey of state and local government workers in 2008. Consequently, timely data on the breakdown between retirement plan types are not available on an annual basis for all (public- and private-sector) workers.

In contrast, the Current Population Survey (CPS), a monthly survey, has asked questions in a consistent manner each March since at least 1988 about whether an employee worked for an employer or union that sponsored a pension or retirement plan for any of its employees, and then if the worker was included in that plan.⁹ The U.S. Census Bureau conducts the CPS for the Bureau of Labor Statistics by interviewing about 57,000 households and asking numerous questions about individuals' work status, employers, income, and basic demographic characteristics. Therefore, the CPS provides detailed information about workers from a broad sample of Americans who are in an employment-based plan, making it possible to establish a consistent annual and timely trend across numerous worker characteristics and the characteristics of their employers.

While the CPS provides excellent detail on overall participation in employment-based plans, it does *not* provide specifics about the plans—such as the worker's plan type or whether the worker is eligible to participate in the plan sponsored by his or her employer or union. This makes the definition of terms in this study important. The term *sponsorship rate* is defined as the percentage of workers in the specified work force who worked for an employer or union that sponsored a plan for *any* of its employees, not necessarily for the worker in question. Thus, in this discussion, the term *percentage of workers participating in a plan* is not synonymous with the standard retirement plan term *participation rate*, which is understood to mean the percentage of eligible workers who participate in a plan. Consequently, *participation rate* is not used in this analysis; instead the terms *participation level* or *percentage participating*, which, to reiterate, refer to the fraction of workers in the specified work force who participated in an employment-based pension or retirement plan regardless of the worker's eligibility (offered a plan and meets the requirements to participate) to participate in a plan. Lastly, the term *participating in a plan* as used here always means a pension or retirement plan provided through an employment-based arrangement, *not* a plan such as an individual retirement account (IRA) that workers can fund outside of an employment-based arrangement.

2006 Participation Levels

Among the 157.0 million Americans who worked in 2006, 78.6 million worked for an employer or union that sponsored a pension or retirement plan, and 62.3 million participated in the plan (Figure 1). This translates into a sponsorship rate (the percentage of workers working for an employer or union that sponsored a plan) of 50.0 percent and a participation level of 39.7 percent.

Figure 1
Percentage of Various Work Forces Who Worked for an Employer That Sponsored a Retirement Plan and the Percentage Who Participated in a Plan, 2006

	All Workers	Wage and Salary Workers Ages 21–64	Private Wage and Salary Workers Ages 21–64	Public Wage and Salary Workers Ages 21–64	Full-Time, Full-Year Wage and Salary Workers Ages 21–64
		(millions)			
Worker Category Total	157.0	130.3	109.6	20.8	96.4
Works for an employer					
sponsoring a plan	78.6	72.4	55.4	17.0	58.4
Participates in a plan	62.3	59.3	44.1	15.2	50.8
		(percentage)			
Worker Category Total	100.0%	100.0%	100.0%	100.0%	100.0%
Works for an employer					
sponsoring a plan	50.0	55.6	50.6	81.8	60.5
Participates in a plan	39.7	45.5	40.3	73.3	52.7

Source: Employee Benefit Research Institute estimates from the 2007 March Current Population Survey.

However, this measure of the work force contains the unincorporated self-employed and those typically with a looser connection to the work force—individuals under age 21 and older than age 64. Therefore, a different measure of the work force is examined: *wage and salary workers* ages 21–64, representing individuals who have a stronger connection to the work force and work for someone else.¹⁰ For this group, the sponsorship rate increases to 55.6 percent and the portion participating increases to 45.5 percent. When separating these wage and salary workers into the public and private sectors, the percentages participating differ significantly. Approximately 75 percent (73.3 percent) of the public-sector workers participated in an employment-based retirement plan, compared with 40.3 percent of the private-sector workers.

A more restrictive definition of the work force, which more closely resembles the types of workers who generally must be covered in accordance with the Employee Retirement Income Security Act (ERISA) for a retirement plan offered by a private-sector employer or union, is the work force of *full-time, full-year wage and salary workers* ages 21–64.¹¹ Approximately 53 percent of these workers participated in a retirement plan. The percentage participating in each work force definition is correlated with the workers' characteristics as well as those of the workers' employers.

The remainder of this section focuses on wage and salary workers, presenting the differences across these characteristics, which, in general, were representative of all the work force populations, except where noted.

Worker Characteristics

The percentage of wage and salary workers ages 21–64 participating in a retirement plan in 2006 increased with age (Figure 2). For those ages 21–24, 19.9 percent participated in a plan, compared with 53.6 percent of those ages 54–64. Male workers were more likely to participate in a plan than females. However, female workers were more likely to have participated in a plan than males among full-time, full-year workers.

Being white or having attained a higher educational level was also associated with a higher probability of participating in a retirement plan. Among white workers, 50.4 percent participated in a plan, compared with 26.5 percent of Hispanic workers. Just under 19 percent of workers without a high school diploma participated in a plan, with the percentage participating increasing with educational attainment to 66.1 percent of those holding a graduate or professional degree.

Workers who were married were more likely to participate in a plan, while never-married workers had the lowest probability. The higher an individual's earnings were, the more likely he or she participated in a plan. One-quarter (25 percent) of those who had annual earnings of \$15,000–\$19,999 participated in a plan. This number increased to 68.4 percent of those earning \$50,000 or more. Furthermore, full-time, full-year

Figure 2

Percentage of Various Work Forces Who Worked for an Employer That Sponsored a Retirement Plan and the Percentage Who Participated in a Plan, by Various Characteristics, 2006

	All Workers			Private-Sector Wage and Salary Workers Ages 21-64			Public-Sector Wage and Salary Workers Ages 21-64			Full-Time, Full-Year Wage and Salary Workers Ages 21-64		
	Number of workers (000s)	Sponsor- ship rate (%)	Percent- age participating (%)	Number of workers (000s)	Sponsor- ship rate (%)	Percent- age participating (%)	Number of workers (000s)	Sponsor- ship rate (%)	Percent- age participating (%)	Number of workers (000s)	Sponsor- ship rate (%)	Percent- age participating (%)
Age												
20 or younger	10,622	24.6%	5.3%									
21-24	12,810	37.6	19.5	12,560	38.3%	19.9%	11,422	35.8%	17.7%	1,138	63.5%	41.4%
25-34	33,410	49.3	37.3	31,925	51.3	38.9	27,947	47.3	34.8	3,979	79.2	67.2
35-44	35,794	53.6	45.6	33,367	56.8	48.5	28,096	51.9	43.4	5,271	82.9	75.8
45-54	35,939	57.3	50.2	32,991	61.5	54.0	26,898	56.5	48.4	6,093	84.0	78.3
55-64	21,708	56.2	49.0	19,492	61.4	53.6	15,190	54.8	47.0	4,303	84.5	77.1
65 or older	6,763	38.1	26.0									
Gender												
Male	83,343	49.0	39.9	68,384	55.0	46.2	59,674	50.9	41.8	8,710	82.8	75.9
Female	73,703	51.0	39.4	61,952	56.2	44.9	49,879	50.2	38.4	12,073	81.1	71.3
Race/Ethnicity												
White	108,850	53.8	43.3	88,795	60.6	50.4	74,034	55.8	45.3	14,761	84.3	76.3
Black	16,834	49.2	37.6	14,749	52.9	41.3	11,750	47.2	35.3	2,999	75.0	65.0
Hispanic	21,473	31.9	23.6	18,391	34.6	26.5	16,576	30.1	22.0	1,815	76.5	67.9
Other	9,891	48.2	37.7	8,401	53.3	42.9	7,192	49.5	39.1	1,209	75.7	65.4
Education												
No high school diploma	19,734	24.0	13.3	12,695	27.4	18.5	12,072	25.6	16.9	623	61.0	50.0
High school diploma	45,880	44.8	34.5	38,139	49.4	39.2	33,804	45.8	35.5	4,334	77.5	68.4
Some college	44,823	51.3	39.2	37,674	56.6	44.6	32,232	52.8	40.4	5,443	79.5	69.3
Bachelor's degree	30,918	62.3	53.6	28,062	66.5	57.5	22,306	61.5	52.2	5,756	85.7	77.9
Grad./profsnl. degree	15,692	69.1	61.8	13,766	73.4	66.1	9,138	66.8	59.1	4,628	86.5	79.9
Marital Status												
Married	88,137	54.8	46.6	77,043	59.6	51.1	63,622	54.3	45.7	13,421	85.0	77.7
Widowed	2,875	48.5	37.1	1,754	56.6	47.3	1,407	50.4	40.6	347	81.8	74.6
Divorced	16,851	52.5	43.2	14,686	57.1	47.3	12,211	52.2	41.9	2,475	81.4	73.9
Separated	3,677	45.7	34.2	3,329	48.3	36.4	2,844	43.3	30.9	485	77.6	68.6
Never married	45,506	40.0	25.6	33,525	46.2	32.8	29,470	42.7	29.2	4,055	71.8	58.6
Work Status												
Full-time, full-year	107,120	56.7	49.1	96,449	60.5	52.7	80,848	55.8	47.4	15,601	85.2	80.4
Full-time, part-year	19,612	42.5	28.0	16,045	46.7	32.1	13,361	40.1	25.1	2,684	79.4	67.2
Part-time, full-year	15,170	33.6	19.0	9,928	39.7	24.4	8,792	36.4	22.0	1,136	65.5	42.8
Part-time, part-year	15,142	27.9	8.6	7,914	33.0	12.0	6,552	27.2	8.5	1,362	61.2	28.9

(cont'd. next page)

(Fig. 2, cont'd.)

	All Workers						Private-Sector						Public-Sector						Full-Time, Full-Year								
	Wage and Salary			Wage and Salary			Wage and Salary			Wage and Salary			Wage and Salary			Wage and Salary			Wage and Salary			Wage and Salary					
	Workers Ages 21-64	Workers Ages 21-64	Workers Ages 21-64	Workers Ages 21-64	Workers Ages 21-64	Workers Ages 21-64	Workers Ages 21-64	Workers Ages 21-64	Workers Ages 21-64	Workers Ages 21-64	Workers Ages 21-64	Workers Ages 21-64	Workers Ages 21-64	Workers Ages 21-64	Workers Ages 21-64	Workers Ages 21-64	Workers Ages 21-64	Workers Ages 21-64	Workers Ages 21-64	Workers Ages 21-64	Workers Ages 21-64	Workers Ages 21-64	Workers Ages 21-64	Workers Ages 21-64			
Number of workers (000s)	Sponsor-ship rate (%)	Percent- age participating (%)	Number of workers (000s)	Sponsor-ship rate (%)	Percent- age participating (%)	Number of workers (000s)	Sponsor-ship rate (%)	Percent- age participating (%)	Number of workers (000s)	Sponsor-ship rate (%)	Percent- age participating (%)	Number of workers (000s)	Sponsor-ship rate (%)	Percent- age participating (%)	Number of workers (000s)	Sponsor-ship rate (%)	Percent- age participating (%)	Number of workers (000s)	Sponsor-ship rate (%)	Percent- age participating (%)	Number of workers (000s)	Sponsor-ship rate (%)	Percent- age participating (%)	Number of workers (000s)	Sponsor-ship rate (%)	Percent- age participating (%)	
Annual Earnings																											
Less than \$5,000	15,982	24.1	6.0	7,478	28.1	8.4	6,470	24.9	7.1	1,008	48.6	17.2	498	43.6	32.0												
\$5,000-\$9,999	11,570	28.6	10.8	7,810	31.5	12.9	6,929	27.4	10.4	880	63.7	32.6	1,465	28.8	16.5												
\$10,000-\$14,999	13,499	31.2	16.2	10,611	34.1	18.6	9,421	29.7	14.8	1,190	68.5	49.1	4,760	31.4	19.3												
\$15,000-\$19,999	12,820	35.7	23.0	10,861	38.1	25.0	9,703	34.2	21.8	1,159	70.6	51.8	7,169	35.8	24.5												
\$20,000-\$29,999	25,869	47.7	36.3	22,890	50.8	38.9	19,930	46.5	34.2	2,959	79.7	70.7	18,497	51.0	39.5												
\$30,000-\$39,999	21,609	58.0	49.5	19,700	61.5	52.6	16,102	56.2	46.3	3,598	85.5	80.9	17,283	61.7	53.0												
\$40,000-\$49,999	16,016	64.4	57.4	14,791	67.9	60.7	11,551	62.5	54.4	3,239	87.2	83.1	13,295	68.2	61.3												
\$50,000 or more	39,681	68.9	64.7	36,196	72.7	68.4	29,446	68.8	64.1	6,751	89.7	87.2	33,483	73.3	69.1												
Occupation																											
Management, business & financial	22,070	57.6	51.5	18,817	64.5	58.1	16,551	61.2	54.6	2,266	88.7	83.4	16,290	66.9	61.4												
Professional & related	31,439	66.8	57.1	28,166	70.9	61.1	18,964	64.6	54.5	9,202	83.7	74.7	20,674	74.5	67.7												
Service	26,818	33.5	22.1	19,969	38.8	27.9	16,112	29.7	18.4	3,857	76.8	67.4	12,362	45.6	37.5												
Sales & related	18,456	42.6	28.9	13,777	49.2	36.1	13,610	48.9	35.9	167	70.1	54.1	9,898	54.6	44.0												
Office & admin. support	21,062	57.4	44.1	18,279	60.8	48.2	14,946	56.3	42.8	3,333	80.9	72.4	13,292	66.7	57.1												
Farming, fishing, forestry	1,195	16.7	11.5	861	20.4	14.6	833	18.9	13.3	28	64.6	51.7	524	22.4	16.5												
Const. & extraction	10,667	29.9	25.2	8,437	34.9	30.0	7,916	32.0	27.1	522	78.3	74.3	6,202	37.7	32.9												
Installation, maint/repair	5,301	52.2	43.6	4,610	56.7	48.0	4,174	53.6	44.6	436	86.1	79.7	4,028	58.9	51.3												
Production	10,378	52.0	41.3	9,353	54.6	44.3	9,114	54.0	43.6	240	76.0	71.8	7,430	59.0	49.8												
Transp./material moving	9,660	44.1	31.3	8,066	47.9	35.3	7,333	45.5	32.8	733	71.7	60.5	5,748	51.4	40.8												
Employer Size																											
10-24 employees	15,187	27.4	20.9	12,823	30.1	23.8	12,823	30.1	23.8				8,950	33.8	28.6												
25-99 employees	18,919	42.7	32.1	16,750	45.2	35.1	16,750	45.2	35.1				12,569	49.6	40.8												
100-499 employees	18,190	55.3	43.0	16,540	57.3	45.6	16,540	57.3	45.6				12,905	61.3	51.4												
500-999 employees	6,909	61.5	49.2	6,346	63.3	51.4	6,346	63.3	51.4				4,848	67.5	57.8												
1,000 or more	43,288	68.1	52.1	38,077	71.4	57.1	38,077	71.4	57.1				29,087	76.3	65.6												
Public sector	22,286	80.7	71.0	20,783	81.8	73.3	20,783	81.8	73.3				15,601	85.2	80.4												
Sector/Industry																											
Private sector	134,760	44.9	34.5	109,552	50.6	40.3	109,552	50.6	40.3				80,848	55.8	47.4												
agriculture, mining, & construction	15,576	26.9	22.2	11,540	32.8	27.8	11,540	32.8	27.8				8,347	35.6	30.8												
manufacturing	17,352	61.6	51.9	16,117	63.9	54.6	16,117	63.9	54.6				13,639	67.1	59.3												
wholesl. & retail trade	22,865	47.1	31.3	17,990	51.8	37.1	17,990	51.8	37.1				13,051	56.3	44.8												
transportation, utilities, infor., & financial	20,746	56.2	47.2	17,974	61.3	52.3	17,974	61.3	52.3				14,568	64.9	57.5												
prof. services	37,136	48.4	37.5	31,103	53.7	42.3	31,103	53.7	42.3				22,060	59.1	50.0												
other services	21,085	24.7	14.9	14,829	29.0	19.4	14,829	29.0	19.4				9,184	34.0	25.7												
Public sector	22,286	80.7	71.0	20,783	81.8	73.3	20,783	81.8	73.3				15,601	85.2	80.4												

Source: Employee Benefit Research Institute estimates from the 2007 March Current Population Survey.

workers were by far the most likely type to participate in a retirement plan. Those individuals working in professional and related occupations had the highest probability of participating in a retirement plan, at 61.1 percent. In comparison, those workers in farming, fishing, and forestry occupations had the lowest likelihood of participating in a plan, at 14.6 percent.

Employer Characteristics

The probability of a worker participating in an employment-based retirement plan increased significantly with the size of his or her employer (Figure 2). For workers at employers with fewer than 10 employees, 13.9 percent participated in a plan, compared with 57.1 percent of those working for an employer with 1,000 or more employees. The sector and industry of the employer also had an impact on the likelihood of participating in a plan. Public-sector workers were significantly more likely to participate than private-sector workers. Workers in the manufacturing industry and the transportation, utilities, information, and financial industry had the highest probabilities of participating, while those in the other services industry had the lowest probability.¹²

A Closer Examination

Gender—Female wage and salary workers ages 21–64 were found to participate in a retirement plan at a lower level than males did. However, among full-time, full-year workers of these same ages, females had a higher rate of participation in a plan (54.4 percent for women, compared with 51.4 percent for men). In fact, across all of the worker status categories, females were more likely to participate in a retirement plan than males (Figure 3). Furthermore, when examining the participation by earnings level, the proportion of females participating in a plan was also higher than it was for males, except for the very lowest earners (Figure 4). Consequently, it appears that female workers' lower probability of participation in the aggregate was a result of their overall lower earnings and/or lower rates of full-time work in comparison with males, not their gender.

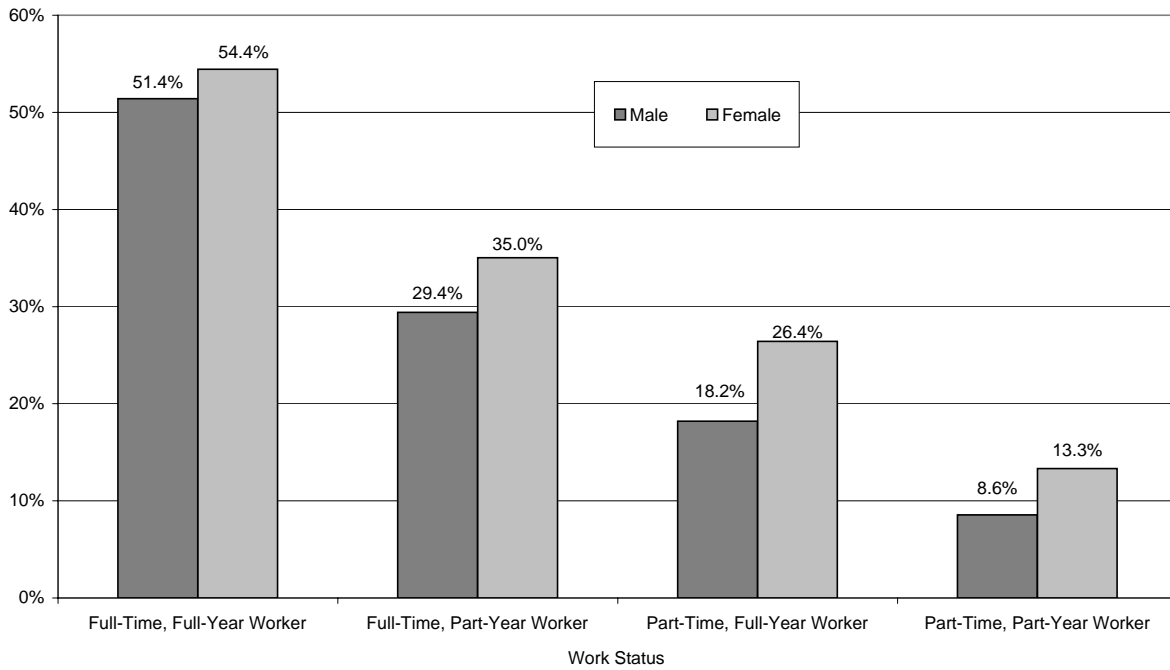
Race/Ethnicity—Analysis of race/ethnicities by earnings level shows that Hispanic wage and salary workers were significantly less likely than both white and black workers to participate in a retirement plan.¹³ The gap between the percentages of black and white plan participants that exists overall narrows when compared across earnings levels (Figure 5). In contrast, the gap between Hispanics and whites persisted in all earnings groups, although it showed some narrowing in the highest two earnings groups.

Another potential contributor to the overall lower level of participation by Hispanic workers could be the characteristics of their employers, such as firm size (number of employees). However, across all the firm sizes, with the exception of public-sector employers, this appears not to be the case, as Hispanic workers had significantly lower participation in employment-based retirement plans than workers of all the other races/ethnicities (Figure 6). For workers at the smallest employers (fewer than 10 employees), 16 percent of white wage and salary workers participated in a plan, compared with 7 percent of the Hispanic workers. These levels increased as the employer size increased, but white workers still had a significantly higher participation level among those working for employers with 1,000 or more employees (61 percent for whites versus 39 percent for Hispanics).

Furthermore, the age of the workers and their race/ethnicity could not explain the differences in the level of participation, as the Hispanic workers' participation levels were significantly lower than the white workers' levels at each age (Figure 7). However, a dramatic shift in Hispanic worker participation levels becomes apparent when analyzed by birthplace—United States or outside the United States. Native-born Hispanic workers age 21 or older had participation levels very similar to those of black and other workers, but still lower than white workers.¹⁴ In contrast, nonnative-born Hispanic workers had substantially lower levels of participation across all age groups. While age is an important factor in the participation in a retirement plan, the earnings levels of nonnative-born Hispanics could be lower across age due to potential language and custom barriers. Yet, even across earnings, nonnative-born Hispanics have a lower probability of participating in a retirement plan, while native-born Hispanics have participation levels closer to those of white and black Americans (Figure 8).

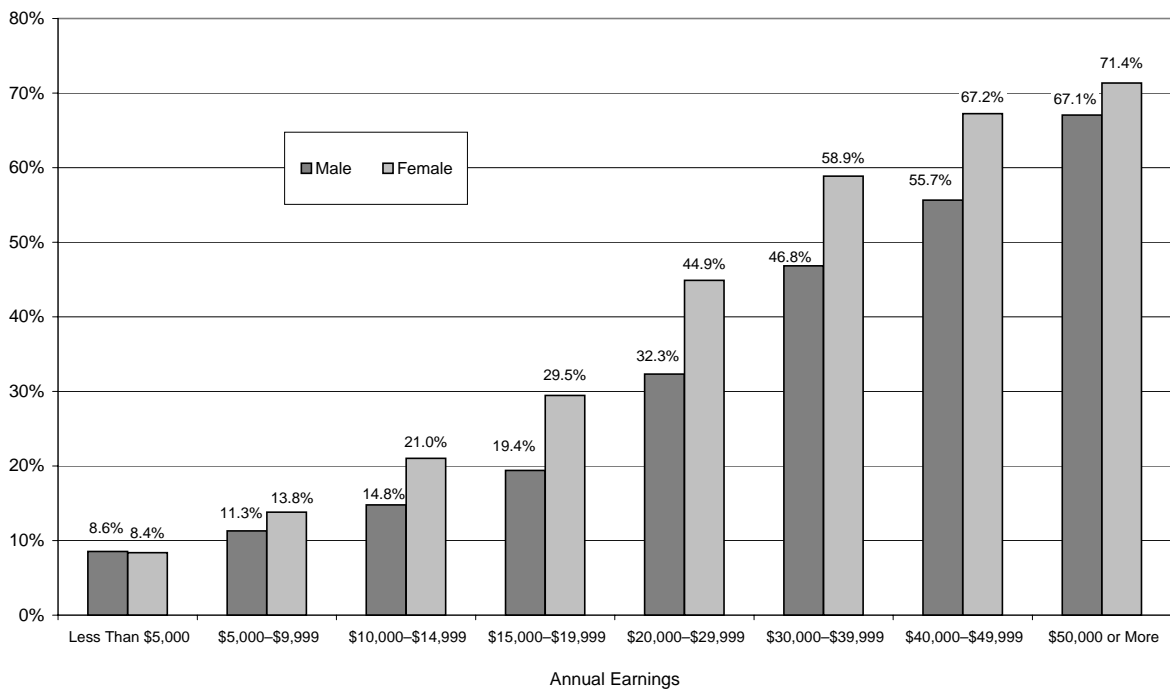
Consequently, while blacks with higher earnings or who were older had levels of retirement plan participation approaching those of white workers, all Hispanics workers combined had persistently lower

Figure 3
Percentage of Wage and Salary Workers Ages 21–64 Who Participated in an Employment-Based Retirement Plan, by Work Status and Gender, 2006



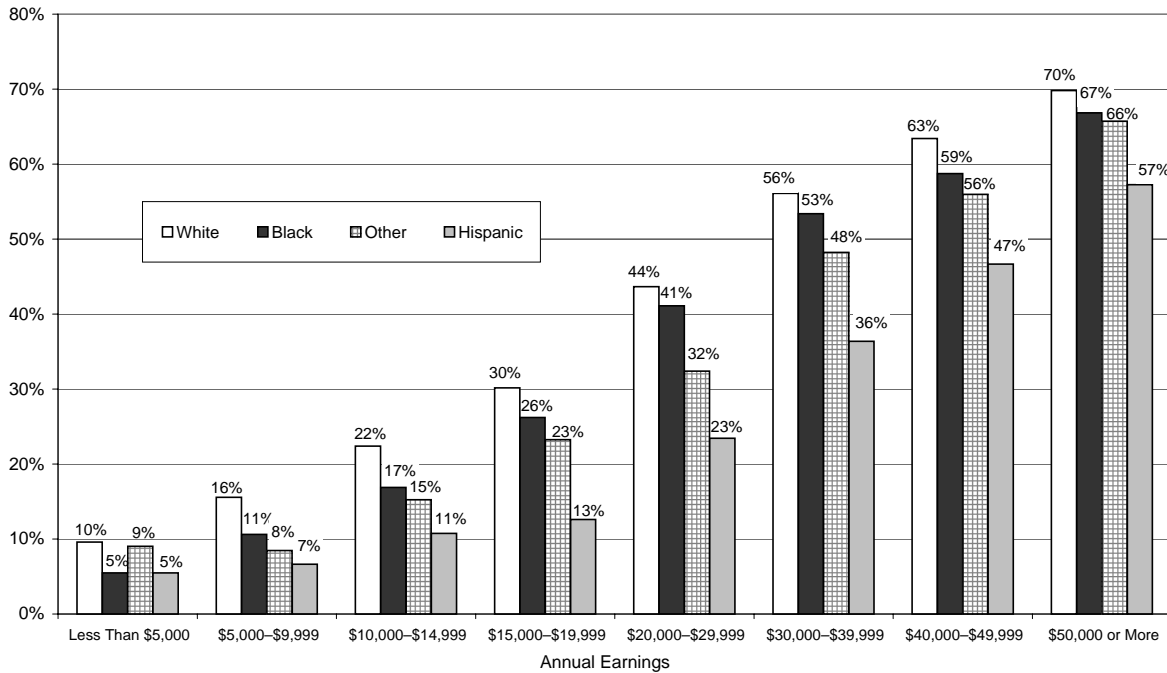
Source: Employee Benefit Research Institute estimates from the 2007 March Current Population Survey.

Figure 4
Percentage of Wage and Salary Workers Ages 21–64 Who Participated in an Employment-Based Retirement Plan, by Annual Earnings and Gender, 2006



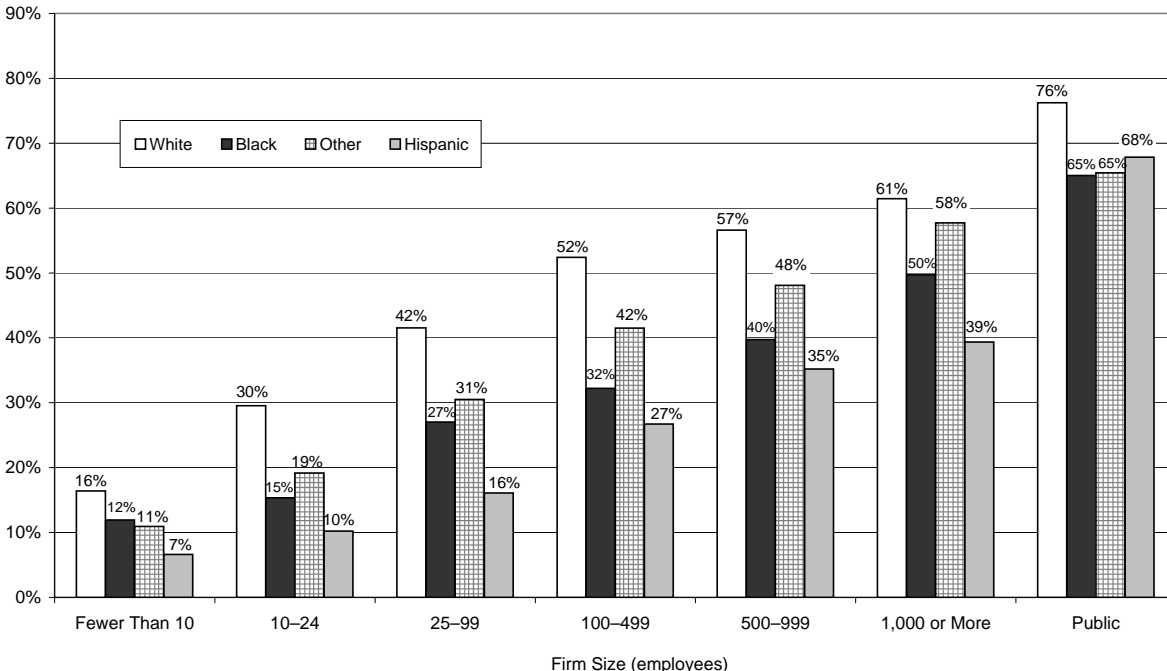
Source: Employee Benefit Research Institute estimates from the 2007 March Current Population Survey.

Figure 5
Percentage of Wage and Salary Workers Ages 21–64
Who Participated in an Employment-Based Retirement Plan,
by Annual Earnings and Race/Ethnicity, 2006



Source: Employee Benefit Research Institute estimates from the 2007 March Current Population Survey.

Figure 6
Percentage of Wage and Salary Workers Ages 21–64
Who Participated in an Employment-Based Retirement Plan,
by Firm Size (Number of Employees) and Race/Ethnicity, 2006



Source: Employee Benefit Research Institute estimates from the 2007 March Current Population Survey.

levels of participation across earnings, age, and employer size. However, when accounting for location of birth, native-born Hispanic workers displayed participation levels near those of black and white workers, whereas the nonnative born Hispanic workers had levels far below those of all the other workers.

Firm Size—Employees of firms with fewer employees were significantly less likely to participate in a retirement plan. A potential explanation for this lower participation could be that these firms employed workers with characteristics associated with lower participation, such as being younger or lower paid. However, when controlling for age, workers at smaller employers still had a persistently lower level of participation across the age groups (Figure 9). Furthermore, across various earnings levels, workers at small employers were less likely to participate in an employment-based retirement plan (Figure 10). Even among workers making \$50,000 or more, a considerable disparity exists—25 percent of those working for the smallest employers participated in a plan, compared with 80 percent of those working for employers with 1,000 or more employees.

Education—Workers with lower educational attainment have lower levels of retirement plan participation. However, educational attainment has a strong correlation with earnings. When controlling for earnings, the most highly educated still had the highest levels of participation, but the differences with the less educated workers were much smaller, particularly as earnings decreased (Figure 11). Yet, those with the least education (no high school diploma) still had significantly lower levels of participation than those with at least a high school diploma. Specifically, 46.6 percent of those without a high school diploma and making \$50,000 or more participated in a retirement plan, compared with 62.4 percent of those with the same earnings and only a high school diploma and 73.8 percent for those with a graduate or professional degree. Consequently, the education level of workers clearly plays a role in the likelihood of participation in a retirement plan beyond determining a worker's earnings level.

Age—Younger workers' significantly lower likelihood of participating in a plan could be the result of having lower incomes at the start of their careers. However, when looking at workers by age across earnings, younger workers are still less likely to be a retirement plan participant than older workers with the same earnings (Figure 12). Even for the highest earners (\$50,000 or more), 47.9 percent of those ages 21–24 participated in a plan compared with 71.3 percent of those ages 45–54.

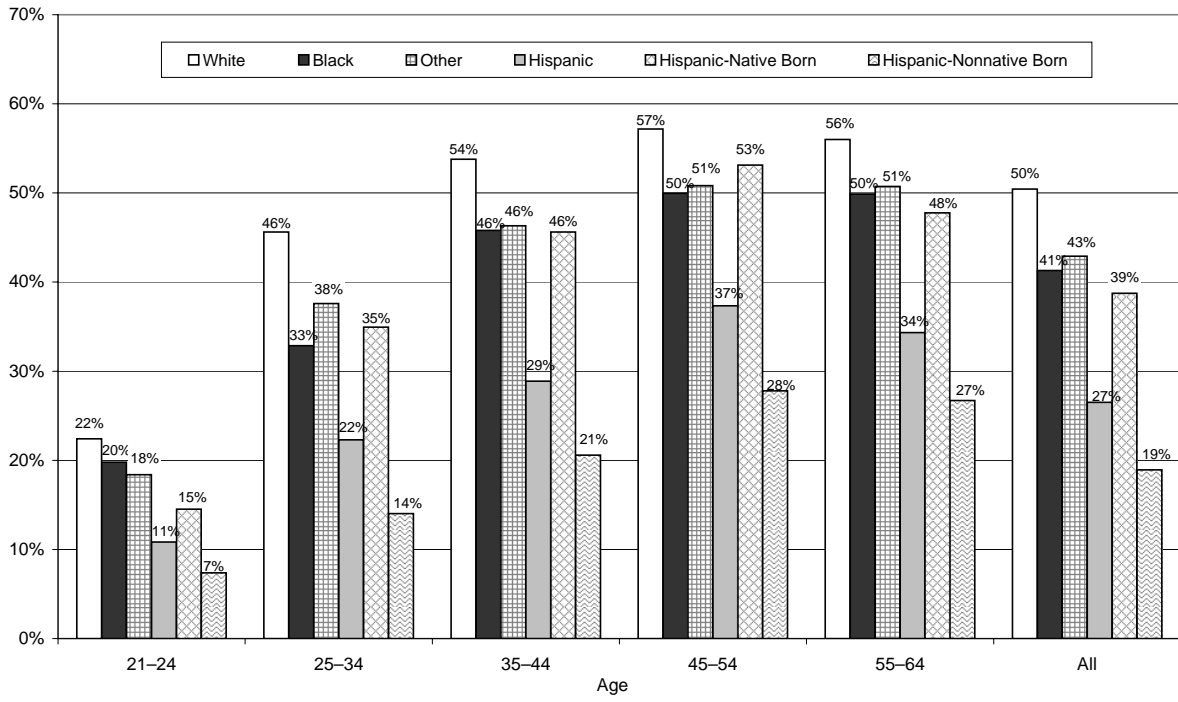
Health Insurance/Status—An important risk to a retiree's finances is his or her health status and health care needs.¹⁵ Health status and the availability of employment-based health insurance from the person's own employer are also correlated with participation in an employment-based retirement plan. Across all ages, workers with employment-based health insurance from their own employer are more than twice as likely to have a retirement plan as those without health insurance from their own employer (Figure 13).¹⁶ For instance, among workers ages 45–54, 68.3 percent of those with health insurance through their own employer participated in an employment-based retirement plan, compared with 27.9 percent of those without health insurance through their own employer.

As the self-reported health status of a worker decreases, the likelihood of participating in a plan also decreases. For example, for workers ages 55–64 who reported having excellent health, 56.2 percent participated in a plan. However, among workers of the same age who reported poor health, only 37.2 percent participated in a plan (Figure 14).

Geographic Differences

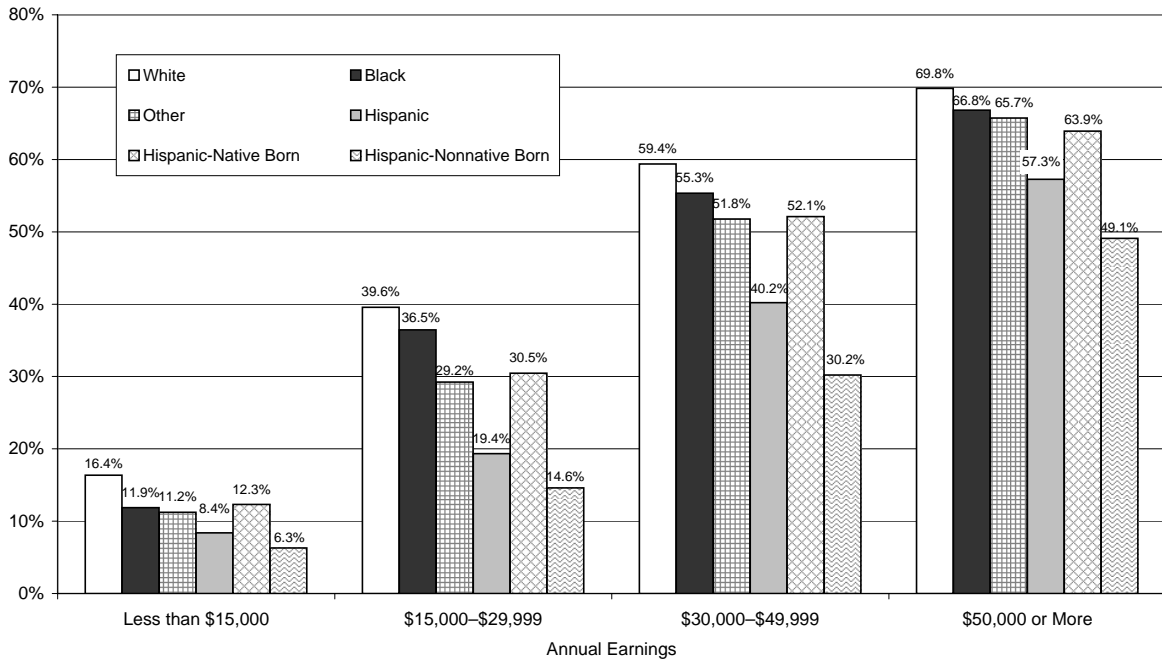
Not only did the workers' characteristics affect the probability of their participation in an employment-based retirement plan, but their geographic location also had an impact. Wage and salary workers ages 21–64 living in Florida had the lowest probability (34.7 percent) of participating in a plan in 2006, while those living in Iowa had the highest probability (54.3 percent) (Figure 15). For other work-force definitions that include private-sector workers, Wisconsin workers had the highest probability (50.2 percent) of participation among private wage and salary workers. Among full-time, full-year wage and salary workers, those from the North Dakota (64.4 percent) had the highest percentage participating, while workers from the Delaware had the highest level (47.3 percent) of participation for the all-worker definition. At the other end of the rankings, full-time, full-year wage and salary workers in Florida had the lowest probability (39.5 percent) of

Figure 7
Percentage of Wage and Salary Workers Ages 21–64 Who Participated
in an Employment-Based Retirement Plan, by Age and Race/Ethnicity, 2006



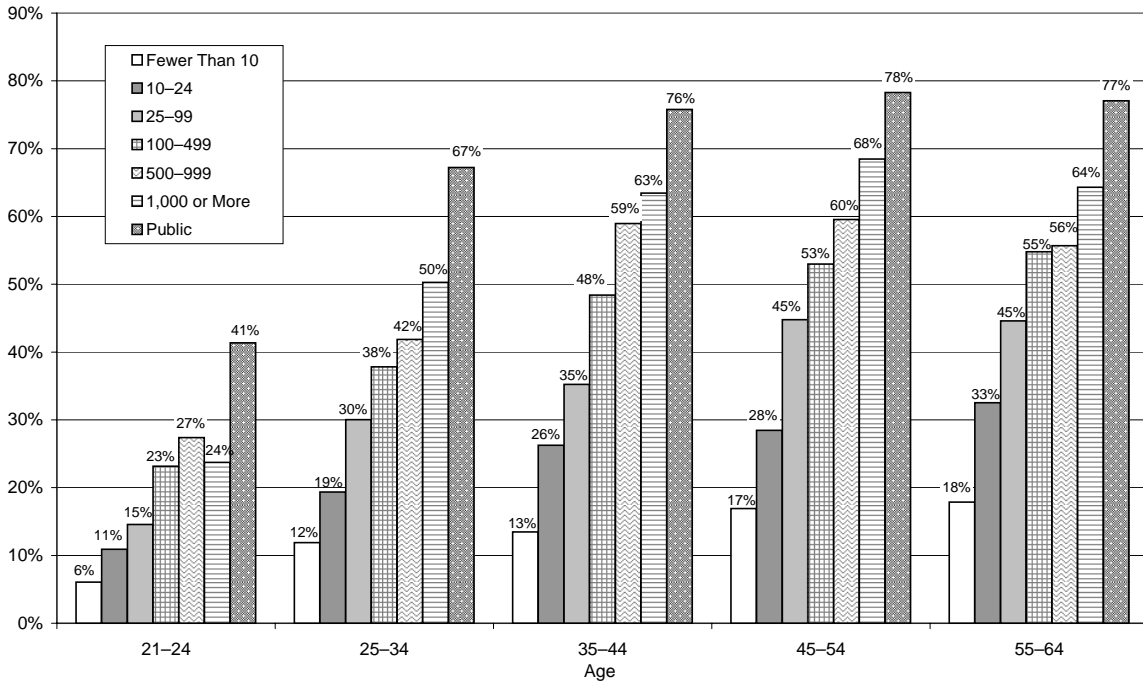
Source: Employee Benefit Research Institute estimates from 2007 March Current Population Survey.

Figure 8
Percentage of Wage and Salary Workers Ages 21–64
Who Participated in an Employment-Based Retirement Plan,
by Race/Ethnicity With Hispanic Detail and Annual Earnings, 2006



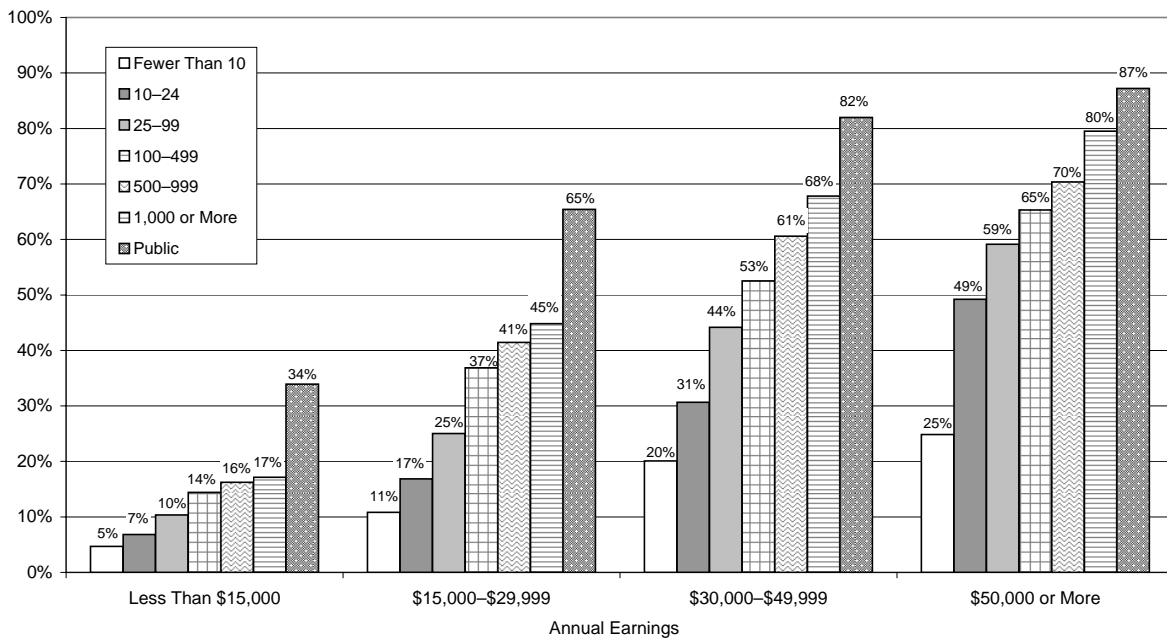
Source: Employee Benefit Research Institute estimates from 2007 March Current Population Survey.

Figure 9
Percentage of Wage and Salary Workers Ages 21–64
Who Participated in an Employment-Based Retirement Plan,
by Age and Employer Size (Number of Employees), 2006



Source: Employee Benefit Research Institute estimates from the 2007 March Current Population Survey.

Figure 10
Percentage of Wage and Salary Workers Ages 21–64
Who Participated in an Employment-Based Retirement Plan,
by Annual Earnings and Employer Size (Number of Employees), 2006



Source: Employee Benefit Research Institute estimates from the 2007 March Current Population Survey.

participation as well for all workers (30.5 percent) and among private wage and salary workers (28.4 percent). Among public-sector wage and salary workers, Delaware workers had the highest percentage of participation (82.7 percent), followed by West Virginia and Oregon workers (81.7 percent and 81.3 percent, respectively). The lowest level of participation among these public-sector workers was for those living in Louisiana (64.4 percent).¹⁷

Using wage and salary workers ages 21–64 as the work-force proxy for the other work-force populations (with the exception of the public-sector workers) showed regional differences across the United States, along with those among the states. The states with the lowest levels of participation—e.g., Florida, Louisiana, Nevada, Arizona, and New Mexico—were in the South, West, or Southwest (Figure 15). The states with the highest participation were in the upper Midwest—e.g., Iowa and Wisconsin—along with some in the Northeast or Mid-Atlantic, such as Delaware and West Virginia. In general, the Midwestern and Northeastern states had the higher participation levels, while the Southern and Western states had the lower levels.

Certain consolidated statistical areas (CSAs) are identified in the CPS, and again those CSAs located in the South and West—e.g., Macon-Warner-Robins-Fort Valley, GA, Fresno-Madera, CA, Los Angeles-Long Beach-Riverside, CA, and Johnson City-Kingsport-Bristol, VA—had the lowest retirement plan participation levels for the work-force definitions including private-sector workers (Figure 16). Workers from the Grand Rapids-Muskegon-Holland, MI, and Appleton-Oshkosh-Neenah, WI, CSAs had the highest participation levels for these same worker definitions. For public-sector wage and salary workers, workers from the Johnson City-Kingsport-Bristol, VA, CSA had the lowest level, while workers from the Dayton-Springfield-Greenville, OH, CSA had the highest participation levels.

Trends

For the second consecutive year the number of workers participating in an employment-based retirement plan declined, from 63.9 million in 2004 to 63.6 million in 2005 to 62.3 million in 2006 (Figure 17). This number is the lowest since 1997, when 60.1 million workers participated in a plan and well below the record highs from 1999–2001, during which a peak of 67.1 million workers participated in 2000. The other work-force definitions (except for public-sector wage and salary workers) also posted the second consecutive decreases in the number participating in 2006.

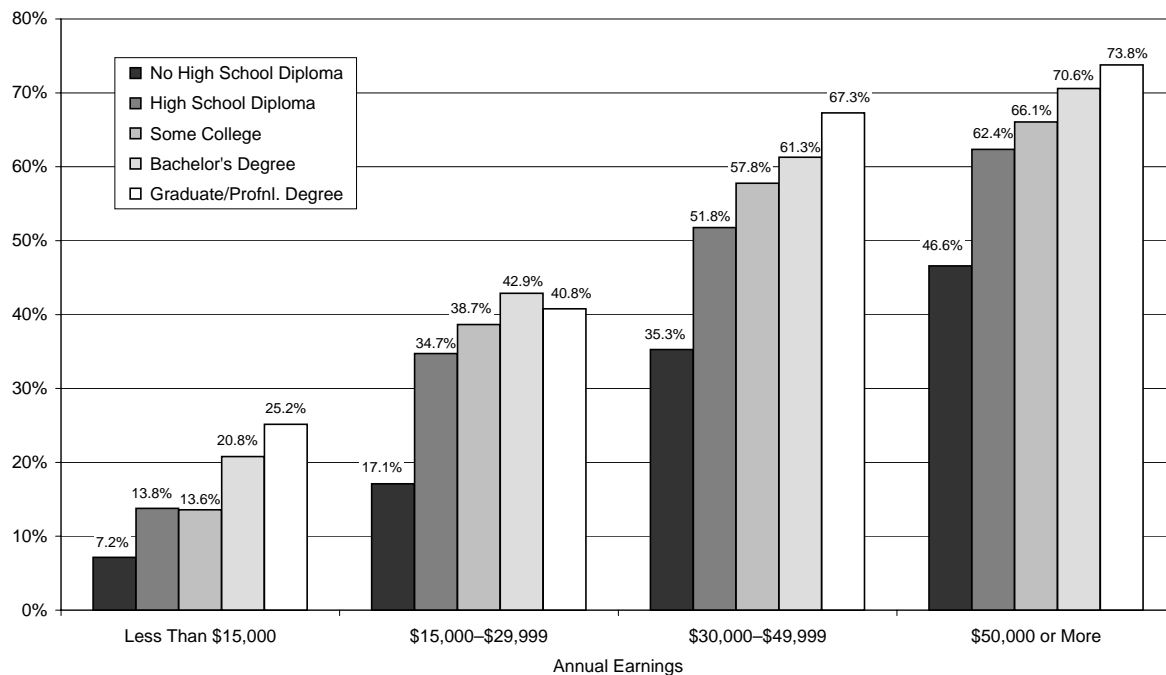
Trends in the Percentage Participating

The downward trend in the percentage of workers participating in an employment-based retirement plan that started in 2001 continued in 2006. Starting with the broadest work-force population (all workers), the percentage of workers participating in an employment-based retirement plan reached 44.4 percent in 2000 before declining to 41.8 percent by 2002, where it held essentially steady at near 42 percent in 2003 and 2004 (Figure 18). The percentage subsequently decreased to 40.9 percent in 2005 and 39.7 percent in 2006. This is lowest level since 1993.

The other three work-force categories that include private-sector workers virtually replicated this pattern. Full-time, full-year wage and salary workers ages 21–64 had the largest percentage point decrease in 2006 among the work force categories with private-sector workers, duplicating the feat that also occurred in 2005. For public-sector wage and salary workers, the percentage participating in a retirement plan decreased from 75.8 percent in 2004 to 74.8 percent in 2005 to 73.3 percent in 2006, reaching its lowest level during 1987–2006.

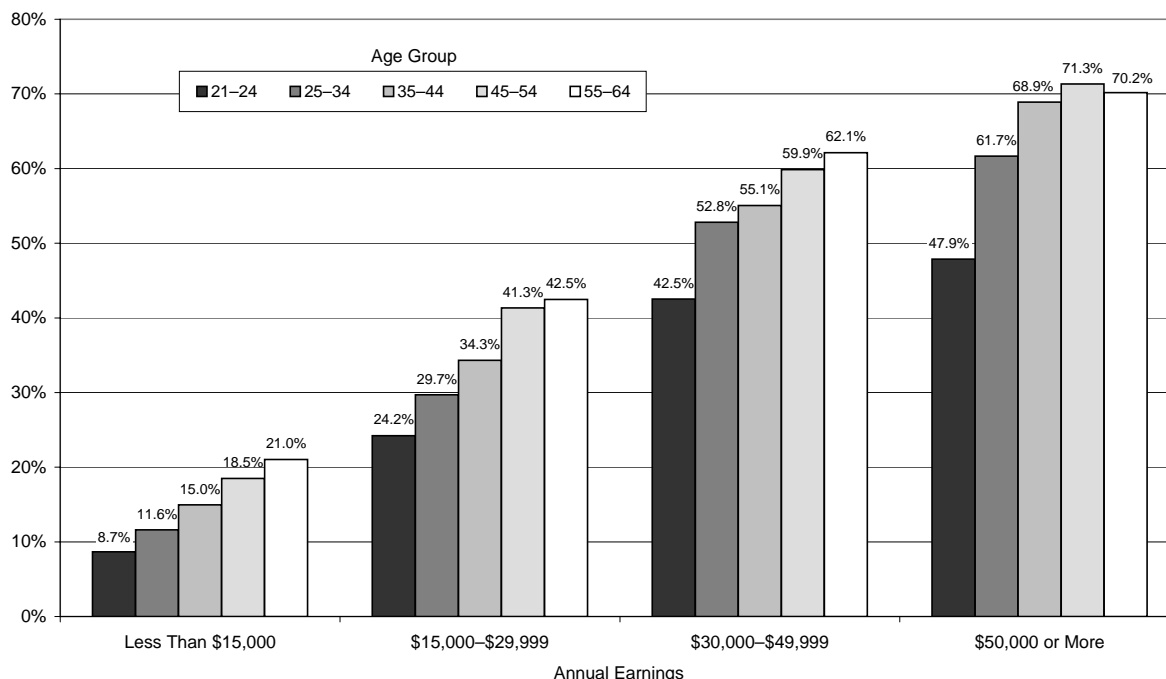
All the work-force definitions had workers' participation levels declining by at least 1 percentage point from 2005 to 2006, as they did from 2004 to 2005. Full-year, full-time workers' participation level experienced the largest decline, with a 2.1 percentage point drop. This is the largest one-year change for this group from 1987–2006. The participation levels in the all wage and salary ages 21–64, full-time, full-year wage and salary ages 21–64, and the public-sector wage and salary ages 21–64 work forces were at their lowest points during 1987–2006, while all and private-sector wage and salary work forces ages 21–64 were at their lowest levels since 1993. Consequently, it may take a significant tightening in the labor market (like the one that occurred in the late 1990s) before the percentage of workers participating in an employment-based retirement plan significantly increases.¹⁸

Figure 11
Percentage of Wage and Salary Workers Ages 21–64
Who Participated in an Employment-Based Retirement Plan,
by Annual Earnings and Educational Attainment, 2006



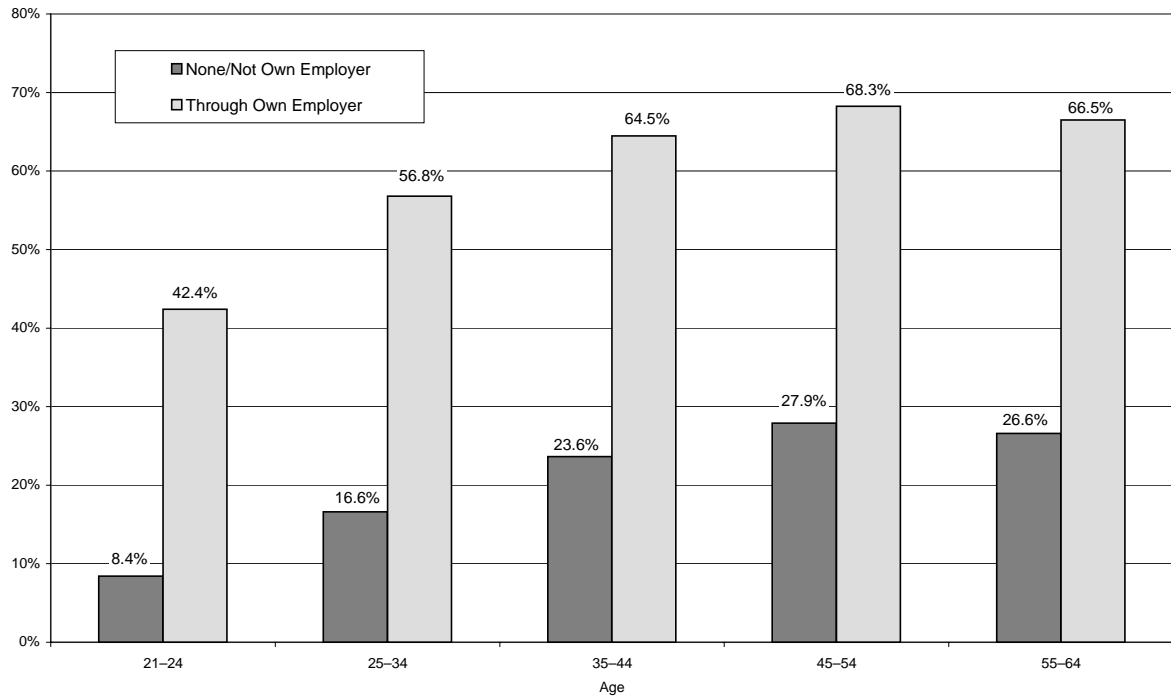
Source: Employee Benefit Research Institute estimates from the 2007 March Current Population Survey.

Figure 12
Percentage of Wage and Salary Workers Ages 21–64 Who
Participated in an Employment-Based Retirement Plan,
by Age and Income, 2006



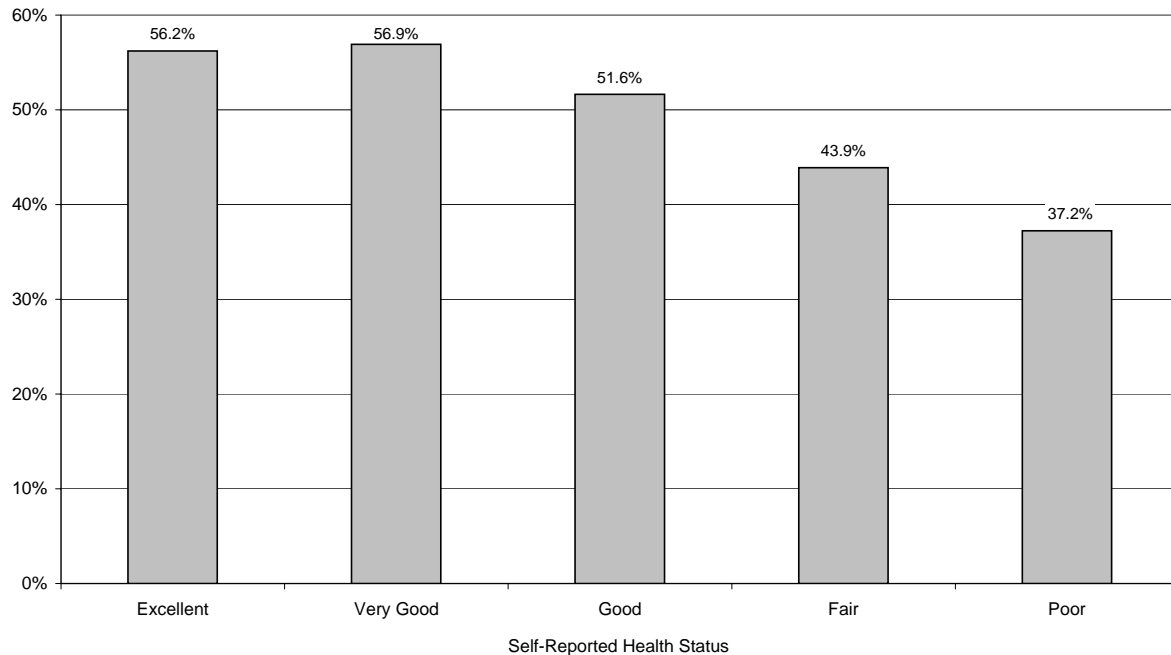
Source: Employee Benefit Research Institute estimates from the 2007 March Current Population Survey.

Figure 13
Percentage of Wage and Salary Workers Ages 21–64 Who Participated in an Employment-Based Retirement Plan, by Health Insurance Status, 2006



Source: Employee Benefit Research Institute estimates from the 2007 March Current Population Survey.

Figure 14
Percentage of Wage and Salary Workers Ages 55–64 Participating in an Employment-Based Retirement Plan, by Self-Reported Health Status, 2006



Source: Employee Benefit Research Institute estimates from the 2007 March Current Population Survey.

The trends in retirement plan participation are different within these work-force definitions, as various characteristics of the workers (as well as those of their employers) affect these trends. The remainder of this section examines these trends across key worker and firm characteristics.

Trends Across Worker Characteristics

The levels of participation for wage and salary workers ages 21–64 had relatively consistent differences across age groups during the 1987–2003 period (Figure 19). The trends within each age group were fairly consistent across this time, with each age group’s participation level varying in a relatively narrow range (approximately up to 4 percentage points). However, one major exception to the overall trend was among workers ages 55–64. Their likelihood of participating in a retirement plan was virtually identical to that of workers ages 35–44 and well below that of those ages 45–54, but by 2006, the likelihood among this group was virtually identical to that of workers ages 45–54—just over 5 percentage points above those ages 35–44.

While the relative differences between the age groups have been fairly constant since 2003 except for the situation described previously, the trend within each age group has been a decrease in the likelihood of participating in a retirement plan. For example, in 2003, 59.0 percent of wage and salary workers ages 45–54 participated in a retirement plan; by 2006, this percentage had decreased to 54.0 percent. Furthermore, the percentage participating among those ages 55–64 decreased by 4.1 percentage points from 2004 to 2006, after an increase from 2002–2004. This is potentially troublesome for the future retirement income of workers ages 45–54, as workers in this age group have most likely attained their “career” job; consequently, they are not able or willing to take advantage of having a significant period of time for any defined contribution balances to accumulate from both contributions and compounding, while at the same time they do not have a high likelihood of ever having a defined benefit (pension) annuity payment in retirement.

The percentage of male wage and salary workers ages 21–64 participating in an employment-based retirement plan continued the decline that started in 2001, falling from 47.8 percent in 2005 to 46.2 percent in 2006 (Figure 20). Despite the fall in the percentage of female workers participating in a plan from 46.1 percent in 2005 to 44.9 percent in 2006, the gap between the percentage of males and females participating continued to narrow. In 1987, males participated at a level just over 10 percentage points higher than females. By 2006, this gap was at 1.3 percentage points.

The percentage of wage and salary workers ages 21–64 participating in a retirement plan in 2006 decreased across each race/ethnicity category, with the exception of the “other” worker category, where the percentage was unchanged (Figure 21).¹⁹ From 2002 to 2004, the percentage participating of workers in each race/ethnicity category was flat to increasing before declines in 2005 that continued in 2006 (except for the “other” group being flat). The percentage of Hispanic workers participating in a plan has been on a fairly steady decline, reaching a new low in 2006 of 26.5 percent, compared with 41.3 percent for black workers and 50.4 percent for white workers.

Wage and salary workers ages 21–64 without a high school diploma experienced a sizable decline in retirement plan participation (Figure 22): from 31.5 percent in 1987 to 18.5 percent in 2006, which includes a nearly 1 percentage point decline in 2006 from 2005. At education levels above high school graduate, the percentage participating in a retirement plan increased over this time period, and did so at a higher rate among those with a bachelor’s degree, and at a more moderate rate among those with a graduate/professional degree and some college. Workers with a bachelor’s degree had a participation level of 52.1 percent in 1987, which declined to 59.3 percent in 2003 before rising slightly to 60.0 percent in 2004 and then falling to 58.8 percent in 2005 and 57.5 percent in 2006. The percentage participating among those with a graduate or professional degree increased from 65.6 percent to 66.1 percent over the period. Those workers with only a high school diploma had a decrease in participation: from 43.9 percent in 1987 to 39.2 percent in 2006, while for those with some college, the 2006 percentage reached its lowest level during the 1987–2006 period.

Clearly, workers with lower educational attainment are falling behind in their retirement plan participation relative to those with more education—particularly when those without a high school diploma are compared with those with a bachelor’s degree. This is not surprising, since education is strongly correlated with income. However, as shown earlier in this study, the correlation with income is not the only factor, as education appears to be a potentially necessary component to making wise retirement decisions.

Figure 15

Percentage of Various Work Forces Who Participated in an Employment-Based Retirement Plan, by State, 2006

State	All Workers		Wage and Salary Workers Ages 21–64		Private-Sector Wage and Salary Workers Ages 21–64		Public-Sector Wage and Salary Workers Ages 21–64		Full-Time, Full-Year Wage and Salary Workers Ages 21–64	
	Number	Participating	Number	Participating	Number	Participating	Number	Participating	Number	Participating
	(millions)	(%)	(millions)	(%)	(millions)	(%)	(millions)	(%)	(millions)	(%)
All	157.0	39.7%	130.3	45.5%	109.6	40.3%	20.8	73.3%	96.4	52.7%
Alabama	2.2	43.4	1.9	48.9	1.6	43.5	0.3	77.0	1.5	55.4
Alaska	0.4	42.1	0.3	50.8	0.2	43.7	0.1	72.9	0.2	62.8
Arizona	3.2	33.9	2.7	38.5	2.3	33.6	0.4	64.9	2.1	43.9
Arkansas	1.4	35.1	1.2	41.6	1.0	35.6	0.2	67.2	0.9	48.4
California	18.5	36.1	15.1	41.5	12.8	35.9	2.3	71.6	11.1	47.4
Colorado	2.8	38.9	2.3	44.6	1.9	38.2	0.4	79.6	1.7	51.3
Connecticut	1.9	41.3	1.6	47.1	1.4	42.7	0.2	73.4	1.1	56.9
Delaware	0.5	47.3	0.4	53.1	0.3	48.1	0.1	82.7	0.3	59.3
Dist. of Columbia	0.3	46.6	0.3	51.1	0.2	43.8	0.1	74.1	0.2	58.2
Florida	9.4	30.5	7.8	34.7	6.7	28.4	1.1	71.4	6.2	39.5
Georgia	5.0	38.8	4.3	43.7	3.6	39.0	0.7	68.0	3.4	50.2
Hawaii	0.7	45.4	0.5	51.7	0.4	46.4	0.1	74.3	0.4	57.6
Idaho	0.8	39.0	0.6	47.6	0.5	41.1	0.1	72.1	0.5	56.1
Illinois	6.7	41.7	5.6	47.4	4.9	43.9	0.7	70.9	4.1	55.2
Indiana	3.4	45.3	2.9	52.5	2.5	49.0	0.4	76.3	2.2	61.8
Iowa	1.7	45.8	1.4	54.3	1.1	49.9	0.2	76.6	1.0	63.5
Kansas	1.5	40.1	1.2	47.0	1.0	42.1	0.2	68.6	0.9	55.2
Kentucky	2.1	39.3	1.7	45.2	1.4	38.3	0.3	77.8	1.3	53.9
Louisiana	2.0	32.5	1.6	37.0	1.3	31.6	0.3	64.4	1.2	43.0
Maine	0.8	39.8	0.6	49.0	0.5	44.5	0.1	70.0	0.4	59.1
Maryland	3.1	41.9	2.6	46.9	2.0	40.0	0.6	70.6	2.1	52.4
Massachusetts	3.4	42.4	2.9	48.5	2.5	44.5	0.3	78.7	2.0	57.5
Michigan	5.2	43.5	4.4	49.8	3.7	46.4	0.7	68.6	3.0	60.1
Minnesota	3.1	44.9	2.5	53.2	2.1	48.6	0.4	78.6	1.7	62.8
Mississippi	1.4	36.9	1.1	42.9	0.9	35.2	0.2	72.1	0.8	51.3
Missouri	3.2	44.3	2.5	51.6	2.1	47.5	0.4	72.4	2.0	58.6
Montana	0.5	37.3	0.4	46.1	0.3	37.3	0.1	75.8	0.3	56.2
Nebraska	1.0	43.4	0.8	51.9	0.7	47.5	0.1	72.4	0.6	60.0
Nevada	1.3	33.3	1.1	37.4	1.0	31.6	0.1	77.2	0.9	42.3
New Hampshire	0.8	42.1	0.6	49.6	0.5	45.9	0.1	71.0	0.5	57.6
New Jersey	4.7	42.0	4.0	46.2	3.4	39.5	0.7	80.2	3.0	52.4
New Mexico	1.0	33.4	0.8	40.3	0.6	30.6	0.2	69.7	0.5	49.8
New York	9.8	39.3	8.2	44.5	6.8	38.1	1.4	75.9	6.1	50.5
North Carolina	4.6	37.1	3.9	42.8	3.3	38.1	0.6	69.7	3.0	48.2
North Dakota	0.4	42.9	0.3	54.0	0.2	48.9	0.1	71.3	0.2	64.4
Ohio	6.2	44.5	5.2	50.1	4.4	45.3	0.8	77.8	3.7	58.4
Oklahoma	1.8	36.2	1.4	43.9	1.1	38.5	0.3	67.8	1.1	51.2
Oregon	2.0	38.6	1.6	46.4	1.4	40.9	0.2	81.3	1.1	55.3
Pennsylvania	6.7	45.6	5.5	52.7	4.8	49.1	0.7	75.9	4.0	61.4
Rhode Island	0.6	43.3	0.5	50.0	0.4	45.3	0.1	76.3	0.3	59.1
South Carolina	2.2	41.7	1.9	46.6	1.5	40.0	0.4	74.9	1.4	54.4
South Dakota	0.5	41.6	0.3	52.4	0.3	46.9	0.1	79.7	0.3	61.6
Tennessee	3.1	37.7	2.5	43.1	2.1	38.3	0.4	67.1	1.9	50.6
Texas	11.6	36.5	9.6	41.7	8.1	35.7	1.5	73.8	7.3	48.6
Utah	1.4	36.4	1.1	43.1	0.9	36.6	0.2	76.4	0.8	51.0
Vermont	0.4	39.6	0.3	49.1	0.2	44.4	0.1	71.1	0.2	59.0
Virginia	4.1	46.5	3.5	52.3	2.8	46.6	0.7	74.8	2.7	60.5
Washington	3.5	42.1	2.9	48.8	2.4	44.5	0.5	71.3	1.9	58.9
West Virginia	0.9	47.0	0.8	53.2	0.6	45.0	0.2	81.7	0.5	62.7
Wisconsin	3.2	46.7	2.6	54.1	2.3	50.2	0.4	77.1	1.9	64.0
Wyoming	0.3	38.5	0.2	48.4	0.2	40.4	0.1	75.6	0.2	58.9

Source: Employee Benefit Research Institute estimates from the 2007 March Current Population Survey.

Figure 16

Percentage of Various Work Forces Who Participated in an Employment-Based Retirement Plan, by Consolidated Statistical Area (CSA), 2006

CSA	All Workers		Wage and Salary Workers Ages 21-64		Private-Sector Wage and Salary Workers Ages 21-64		Public-Sector Wage and Salary Workers Ages 21-64		Full-Time, Full-Year Wage and Salary Workers Ages 21-64	
	Number (millions)	Participating (%)	Number (millions)	Participating (%)	Number (millions)	Participating (%)	Number (millions)	Participating (%)	Number (millions)	Participating (%)
All	157.05	39.7%	130.34	45.5%	109.55	40.3%	20.78	73.3%	96.45	52.7%
Unrecorded CSAs	99.93	39.0	82.17	45.2	68.42	39.6	13.75	73.3	60.80	52.5
Appleton-Oshkosh-Neenah, WI	0.25	50.9	0.21	57.1	0.18	53.0	0.03	81.2	0.16	67.8
Boston-Worcester-Manchester, MA-NH-CT-ME	3.03	43.5	2.56	49.6	2.27	46.1	0.29	77.4	1.83	59.1
Bridgeport-New Haven-Stamford, CT	1.02	37.4	0.84	42.4	0.74	38.6	0.10	69.4	0.60	49.9
Chicago-Naperville-Michigan City, IL-IN-WI	4.89	40.1	4.20	44.7	3.73	41.8	0.47	67.2	3.14	51.7
Cleveland-Akron-Elyria, OH	1.49	45.4	1.23	51.2	1.04	47.2	0.19	72.6	0.86	58.2
Dayton-Springfield-Greenville, OH	0.49	41.9	0.42	46.9	0.37	40.9	0.05	89.3	0.27	59.4
Denver-Aurora-Boulder, CO	1.58	39.7	1.32	45.0	1.13	39.9	0.18	76.6	0.97	52.4
Detroit-Warren-Flint, MI	2.64	44.7	2.29	50.0	1.97	46.7	0.32	70.5	1.59	60.5
Fresno-Madera, CA	0.49	34.3	0.38	36.1	0.31	28.2	0.07	70.2	0.27	44.3
Grand Rapids-Muskegon-Holland, MI	0.83	53.8	0.71	60.9	0.61	58.6	0.10	74.7	0.48	71.0
Greensboro--Winston-Salem--High Point, NC	0.65	36.8	0.55	40.8	0.50	37.8	0.05	70.9	0.36	45.8
Greenville-Anderson-Seneca, SC	0.32	46.7	0.28	49.2	0.24	46.1	0.04	68.9	0.19	64.3
Huntsville-Decatur, AL	0.36	41.3	0.30	48.7	0.26	43.7	0.04	84.6	0.24	52.8
Indianapolis-Anderson-Colombus, IN	0.99	45.8	0.85	52.8	0.74	48.2	0.11	83.2	0.70	61.0
Johnson City-Kingsport-Bristol, VA	0.16	30.9	0.12	41.6	0.09	42.1	0.03	39.8	0.10	42.7
Los Angeles-Long Beach-Riverside, CA	9.00	32.4	7.45	37.0	6.33	31.4	1.12	68.5	5.62	41.4
Macon-Warner-Robins-Fort Valley, GA	0.11	30.3	0.09	34.4	0.08	28.2	0.01	71.1	0.08	36.5
Milwaukee-Racine-Waukesha, WI	1.02	43.4	0.87	49.2	0.78	46.8	0.09	70.6	0.63	57.4
Minneapolis-St. Paul-St. Cloud, MN	1.94	45.8	1.60	53.0	1.39	49.0	0.21	79.6	1.13	62.1
New York-Newark-Bridgeport, NY-NJ-CT-PA	10.43	38.4	8.93	42.4	7.54	36.5	1.38	75.0	6.76	48.7
Phila.-Camden-Vineland, PA-NJ-DE-MD	2.98	47.8	2.52	53.8	2.21	50.2	0.31	79.6	1.90	61.0
Raleigh-Durham-Cary, NC	0.90	43.4	0.79	48.7	0.67	42.5	0.12	82.2	0.66	52.0
Salt Lake City-Ogden-Clearfield, UT	0.85	38.4	0.71	44.2	0.59	37.8	0.12	76.7	0.51	51.0
San Jose-San Francisco-Oakland, CA	4.19	44.6	3.44	51.0	3.00	47.6	0.44	74.0	2.41	59.7
Seattle-Tacoma-Olympia, WA	2.15	43.2	1.82	49.3	1.51	44.4	0.31	72.9	1.26	58.7
Wash.-Balt.-No. VA, DC-MD-VA-WV	4.36	45.5	3.70	51.3	2.85	45.0	0.85	72.3	2.93	57.4

Source: Employee Benefit Research Institute estimates from the 2007 March Current Population Survey.

Regarding income, the percentage of workers in each earnings group who participated in a retirement plan decreased from 2005 to 2006, with the exception of those workers in the two lowest income groups (Figure 23).²⁰ This has been the trend for the higher-earnings groups since their peak levels in the late 1990s, with the 2006 levels being below the participation levels in 1987. However, the trends in participation for the lower-earnings groups were flat to increasing since 1987. This trend for low earners is consistent with the increased participation levels found for part-year workers over this period, which will be discussed later. Workers making \$40,000–\$49,999 experienced the largest decline in participation in 2006 (4.3 percentage points), while for those earning \$10,000–\$14,999 the participation level remained essentially unchanged.

The percentage of full-time, full-year wage and salary workers participating in a retirement plan decreased to 52.7 percent in 2006 from 54.8 percent in 2005, which is on top of the decline from 56.6 percent in 2004. This is approximately 6 percentage points below its 1987 level and 8 percentage points below its peak year of 1999 (Figure 24). In contrast, the percentage of workers who were part-time, full-year workers and participated in a plan in 2006 was only 3.5 percentage points below its peak year and above the 1987 level. The percentages of part-year workers participating in a plan in 2006 still surpass those in 1987.

Trends Across Employer Characteristics

The growth in retirement plan participation levels across firm sizes over the 1987–2006 period occurred among smaller private-sector firms (Figure 25). In particular, workers in firms with 25–99 employees had an increased probability of participating in a retirement plan, rising from 28.2 percent in 1987 to 35.1 percent in 2006. Furthermore, workers in the smallest firms (fewer than 10 employees and 10–24 employees) had significant increases of 2.0 percentage points and 4.0 percentage points, respectively, from 1991 to 2006. Furthermore, workers in firms with 100–499 employees also had an increase in retirement plan participation, increasing from 42.5 percent in 1987 to 45.6 percent in 2006. In contrast, the percentage of retirement plan participants working for the largest private firms (1,000 or more employees) declined from 1987 to 2006, dropping from 63.2 percent to 57.1 percent over the period, including a nearly 1 percentage point decline in 2006. This appears to be a result of larger firms shifting to DC plans, where some workers are choosing not to participate, while smaller firms have increasingly offered defined contribution retirement plans leading to more of their workers participating.

While the trend from 1987 is positive for small-firm workers, the trend in 2006 was not, with declines in participation levels for workers in firms with 10–24 employees and 25–99 employees of about 1 to 2 percentage points from 2005. These decreases were in line with those for workers of the larger employers. Even public-sector workers experienced a decline in their likelihood of participating in a plan in 2006. Therefore, 2006 was *not* a stellar year for retirement plan participation in any firm size category.

The percentage of wage and salary workers ages 21–64 who participated in a retirement plan declined across each industry/sector in 2006 (Figure 26).²¹ Workers' likelihood of participating in a plan in each industry/sector is also below the levels established in 2002. Workers in the manufacturing industry experienced the largest percentage point decline in their probability of participating in a plan in 2006 at just over 3 percentage points.

Conclusion

In 2006, 39.7 percent of all workers, or 62.3 million Americans, participated in an employment-based retirement plan. Among full-time, full-year wage and salary workers ages 21 to 64—those with the strongest connection to the work force—52.7 percent participated. This percentage of participating workers varied significantly across many worker characteristics and the characteristics of their employers. Being nonwhite, younger, female, never married; having lower educational attainment, lower earnings, poorer health status, no health insurance through own employer; not working full time, full year, and working in service occupations or farming, fisheries, and forestry occupations were all associated with a lower level of participation in a retirement plan. In addition, workers working for smaller firms, private-sector firms, or firms in the other (not professional) services industry were also less likely to participate in a retirement plan. Another factor in the likelihood of workers' participation in a retirement plan was their geographic location, with workers in

Figure 17

**Percentage of Various Work Forces Who Worked for an Employer That Sponsored a Retirement Plan
and the Percentage Who Participated in an Employment-Based Retirement Plan, 1987–2006**

	1987	1988	1989	1990	1991	1992	1993	1994	1995	1996	1997	1998	1999	2000	2001	2002	2003	2004	2005	2006
All Workers																				
	(millions)																			
Number of Workers	130.4	132.6	133.8	134.5	134.4	134.8	136.2	138.2	139.6	142.1	143.8	145.5	149.7	151.1	150.9	151.3	151.1	152.7	154.7	157.0
Works for an employer sponsoring a plan	63.0	64.9	66.3	67.9	68.6	69.2	68.2	74.0	73.7	77.5	78.2	82.0	83.3	85.7	83.5	80.7	80.6	81.2	79.7	78.6
Participates in a plan	49.0	50.3	52.0	52.5	53.4	53.1	53.1	56.7	57.3	59.3	60.1	63.4	65.5	67.1	64.9	63.2	63.5	63.9	63.6	62.3
	(percentage)																			
Total	100.0%	100.0%	100.0%	100.0%	100.0%	100.0%	100.0%	100.0%	100.0%	100.0%	100.0%	100.0%	100.0%	100.0%	100.0%	100.0%	100.0%	100.0%	100.0%	100.0%
Works for an employer sponsoring a plan	48.3	48.9	49.6	50.5	51.0	51.3	50.1	53.5	52.8	54.5	54.4	56.4	55.6	56.7	55.3	53.4	53.4	53.2	51.5	50.0
Participates in a plan	37.6	38.0	38.9	39.0	39.7	39.4	39.0	41.0	41.0	41.7	41.8	43.6	43.8	44.4	43.0	41.8	42.0	41.9	40.9	39.7
Wage and Salary Workers Ages 21–64																				
	(millions)																			
Number of Workers	100.2	102.2	103.4	104.4	109.2	109.7	110.5	112.7	115.3	117.6	117.3	118.9	122.4	124.0	124.7	125.4	125.4	126.2	128.4	130.3
Works for an employer sponsoring a plan	57.3	58.8	60.0	61.7	63.4	64.0	63.1	68.0	68.1	71.3	72.0	75.1	76.5	78.5	77.0	74.6	74.7	75.1	73.8	72.4
Participates in a plan	46.2	47.3	48.8	49.5	51.1	51.0	51.0	54.3	55.1	56.9	57.6	60.6	62.5	63.9	62.1	60.4	60.7	61.0	60.3	59.3
	(percentage)																			
Total	100.0%	100.0%	100.0%	100.0%	100.0%	100.0%	100.0%	100.0%	100.0%	100.0%	100.0%	100.0%	100.0%	100.0%	100.0%	100.0%	100.0%	100.0%	100.0%	100.0%
Works for an employer sponsoring a plan	57.2	57.5	58.0	59.1	58.1	58.4	57.1	60.4	59.1	60.6	61.4	63.2	62.5	63.3	61.7	59.5	59.6	59.5	57.5	55.6
Participates in a plan	46.1	46.2	47.2	47.4	46.8	46.5	46.2	48.2	47.8	48.4	49.1	51.0	51.1	51.6	49.8	48.2	48.4	48.3	47.0	45.5
Private-Sector Wage and Salary Workers Ages 21–64																				
	(millions)																			
Number of Workers	82.6	84.2	85.2	86.1	90.6	90.7	91.1	93.4	96.7	99.3	98.9	100.1	102.7	104.3	105.1	105.3	105.4	105.7	108.0	109.6
Works for an employer sponsoring a plan	41.9	43.1	44.1	45.7	47.2	47.4	46.7	51.0	51.9	55.2	56.2	58.8	59.4	61.5	60.3	57.8	57.8	57.6	56.8	55.4
Participates in a plan	32.9	33.7	34.8	35.6	37.0	36.6	36.6	39.3	40.8	42.8	43.7	46.1	47.3	48.7	47.4	45.4	45.5	45.4	45.1	44.1
	(percentage)																			
Total	100.0%	100.0%	100.0%	100.0%	100.0%	100.0%	100.0%	100.0%	100.0%	100.0%	100.0%	100.0%	100.0%	100.0%	100.0%	100.0%	100.0%	100.0%	100.0%	100.0%
Works for an employer sponsoring a plan	50.7	51.2	51.7	53.1	52.1	52.3	51.2	54.6	53.7	55.6	56.8	58.7	57.8	59.0	57.4	54.9	54.8	54.5	52.6	50.6
Participates in a plan	39.8	40.0	40.9	41.3	40.8	40.4	40.1	42.1	42.2	43.1	44.2	46.1	46.1	46.7	45.1	43.1	43.2	43.0	41.7	40.3

(cont'd.)

(Fig. 17, cont'd.)
**Percentage of Various Work Forces Who Worked for an Employer That Sponsored a Retirement Plan
and the Percentage Who Participated in an Employment-Based Retirement Plan, 1987–2006**

	1987	1988	1989	1990	1991	1992	1993	1994	1995	1996	1997	1998	1999	2000	2001	2002	2003	2004	2005	2006
	Public-Sector Wage and Salary Workers Ages 21–64																			
	(millions)																			
Number of Workers Works for an employer sponsoring a plan	17.6	18.0	18.2	18.3	18.7	19.1	19.3	19.3	18.6	18.3	18.4	18.8	19.7	19.6	19.6	20.0	20.0	20.5	20.4	20.8
Participants in a plan	15.4	15.6	15.9	16.0	16.3	16.6	16.4	17.0	16.1	16.0	15.9	16.3	17.1	17.0	16.6	16.8	17.0	17.5	17.0	17.0
	13.3	13.6	13.9	13.9	14.2	14.3	14.4	15.0	14.3	14.1	13.9	14.5	15.2	15.2	14.8	15.0	15.2	15.6	15.2	15.2
	(percentage)																			
Total Works for an employer sponsoring a plan	100.0%	100.0%	100.0%	100.0%	100.0%	100.0%	100.0%	100.0%	100.0%	100.0%	100.0%	100.0%	100.0%	100.0%	100.0%	100.0%	100.0%	100.0%	100.0%	100.0%
Participants in a plan	87.4	86.6	87.2	87.5	87.3	87.3	85.1	88.1	86.9	87.6	86.0	87.1	86.9	86.4	84.9	83.7	84.8	85.1	83.6	81.8
	75.6	75.6	76.3	76.1	76.1	75.2	74.5	77.6	76.7	77.1	75.5	77.2	77.2	77.3	75.3	74.8	75.8	75.8	74.8	73.3
	Full-Time, Full-Year Wage and Salary Workers Ages 21–64																			
	(millions)																			
Number of Workers Works for an employer sponsoring a plan	66.2	68.6	68.9	68.9	71.7	72.8	74.2	76.5	79.9	81.7	83.0	85.9	88.6	91.3	90.1	90.0	90.3	91.7	94.0	96.4
Participants in a plan	44.1	45.8	46.2	46.9	48.0	49.1	48.7	52.3	52.9	55.4	56.5	59.6	61.2	62.6	60.8	58.6	59.2	59.6	59.1	58.4
	38.7	40.0	40.7	41	42.2	42.9	42.8	45.6	46.3	48.2	49.1	51.8	53.5	54.6	52.5	51.1	51.5	51.9	51.5	50.6
	(percentage)																			
Total Works for an employer sponsoring a plan	100.0%	100.0%	100.0%	100.0%	100.0%	100.0%	100.0%	100.0%	100.0%	100.0%	100.0%	100.0%	100.0%	100.0%	100.0%	100.0%	100.0%	100.0%	100.0%	100.0%
Participants in a plan	66.6	66.8	67.0	68.1	67.0	67.4	65.7	68.4	66.2	67.8	68.1	69.4	69.1	68.6	67.5	65.1	65.6	65.0	62.9	60.5
	58.4	58.3	59.0	59.5	58.9	59.0	57.7	59.6	57.9	59.0	59.2	60.3	60.4	59.8	58.3	56.7	57.1	56.6	54.8	52.7

Source: Employee Benefit Research Institute estimates from the 1988–2007 March Current Population Surveys.

the South and West (Southwest in particular) less likely to participate in a plan than those in other regions of the country.

A closer examination of certain characteristics provides some revealing findings. In particular, while the overall percentage of females participating in a plan was lower than that of males, the retirement plan participation gender gap is closing; when controlling for work status or earnings, the female participation level actually surpasses that of males.²² Furthermore, black and native-born Hispanic workers had participation levels much closer to those of white workers within each age group. Nonnative-born Hispanics had substantially lower participation levels than native-born Hispanics, even when controlling for age and earnings. This results in all Hispanics looking worse off in terms of retirement plan participation, when it is really only the nonnative Hispanics who have participation levels substantially below those of all other workers.

The second straight year of a decline in the number of workers participating occurred in 2006. The 2006 total of participating workers was at its lowest level since 1997 and was 4.8 million lower than in the peak year of 2000.

The percentage of workers participating in a retirement plan declined across virtually all of the categories examined, except for those ages 21–24, earning less than \$10,000, and working full-time, part-year, where the percentages increased slightly. After increasing or holding relatively steady through 2004, the percentage of participating employees working for smaller employers (25–99 employees) declined by approximately 1.5 percentage points in 2006, which was in addition to the more than 2 percentage point decline in 2005. The percentage of those working for the largest employers (1,000 or more employees) who participated in a plan continued a decline that started in 1998 except for the one-year jump 2003. Prior to 2005, the percentage participating among small-employer workers had been holding steady, while the percentage among the large employee workers was trending downward.

While individual factors are important, retirement plan participation by workers is also strongly tied to macro factors such as (most importantly) the labor market. The participation trends increased significantly when the labor market was tight in the late 1990s, and decreased when unemployment went up in 2001 and 2002. With a more stable job market in 2003 and 2004, the participation trend flattened out. However, even with the stable job market in 2005, the retirement plan participation level declined. Therefore, it appears a much tighter job market may be needed to push the trend upward. Regardless of the current direction, this trend has important implications for workers, since having more opportunities to participate in an employment-based retirement plan greatly increases the amount of money a retiree is likely to have in retirement.²³

However, many underlying factors will continue to affect the future direction of this trend. In particular, the decline and freezing of defined benefit pension plans in the private sector will, at a minimum, have an effect on the type of retirement plans that private-sector workers participate in, as well as on the number of people participating in a plan. However, now that the legal status of cash balance pension plans has been clarified (prospectively) in the 2006 Pension Protection Act (PPA), another alternative to traditional pension plans exists for defined benefit plan sponsors. Furthermore, the provisions supporting automatic enrollment and investment advice for defined contribution plans could work in favor of increasing the trend in participation.²⁴ Consequently, how employers and employees respond to the provisions of the PPA will be important factors in the future direction of the trend in participation.

Regardless, participating in a retirement plan is just one step (although an important one) among several toward financing a comfortable retirement. Other sources of income or benefits in retirement, including Social Security, Medicare, personal savings, some type of supplemental health insurance to Medicare, and long-term care insurance, also will influence whether people have adequate funds available to maintain a similar standard of living throughout retirement. How the money is *managed*, to ensure it lasts throughout retirement, will be an additional crucial factor for the sharply growing number of retirees who will receive only lump sums from their retirement plans—rather than annuities—outside of Social Security.

As VanDerhei and Copeland (2003) show, many cohorts of future retirees are projected to be unlikely to be able to pay for general retirement expenses throughout their retirement years, particularly if the retirees live beyond their average life expectancy or if they or their spouses have a significant period of long-term care needs. Furthermore, the savings goal of an individual is not a simple rule of thumb but a more

complicated calculation that must account for all the risks in retirement—investment, longevity, and health care needs. Depending upon one’s comfort and/or ability of assuming these risks, there is wide variation in the amount of assets an individual will need to accumulate for retirement.²⁶

References

Board of Trustees of the Federal Old-Age and Survivors Insurance and Disability Insurance Trust Funds. *2007 Annual Report of the Board of Trustees of the Federal Old-Age and Survivors Insurance and Disability Insurance Trust Funds*. www.ssa.gov/OACT/TR/TR07/index.html, April 23, 2007.

Copeland, Craig. “Employment-Based Retirement Plan Participation: Geographic Differences and Trends, 2004.” *EBRI Issue Brief*, no. 286 (Employee Benefit Research Institute, October 2005a).

_____. “Individual Account Retirement Plans: An Analysis of the 2004 Survey of Consumer Finances.” *EBRI Issue Brief*, no. 293 (Employee Benefit Research Institute, May 2006).

_____. “Retirement Plan Participation: Survey of Income and Program Participation (SIPP) Data.” *EBRI Notes*, no. 9 (Employee Benefit Research Institute, September 2005b): 1–12.

Fronstin, Paul. “Counting the Uninsured: A Comparison of National Surveys.” *EBRI Issue Brief*, no. 225 (Employee Benefit Research Institute, September 2000).

Holden, Sarah, and Jack VanDerhei. “Can 401(k) Accumulations Generate Significant Income for Future Retirees?” *EBRI Issue Brief*, no. 251 (Employee Benefit Research Institute, November 2002).

_____. “The Influence of Automatic Enrollment, Catch-Up, and IRA Contributions on 401(k) Accumulations at Retirement.” *ICI Perspective*. Vol. 11, No. 2, and *EBRI Issue Brief*, no. 283 (Investment Company Institute and Employee Benefit Research Institute, July 2005).

Purcell, Patrick. “Pension Sponsorship and Participation: Summary of Recent Trends.” *CRS Reports for Congress*. RL30122 (Congressional Research Services, August 2006).

U.S. Department of Labor. Employee Benefits Security Administration. *Private Pension Plan Bulletin: Abstract of 2002 Form 5500 Annual Reports* (July 2006).
www.dol.gov/ebsa/pdf/2002pensionplanbulletin.pdf

_____. *Private Pension Plan Bulletin: Abstract of 1999 Form 5500 Annual Reports* (Summer 2004).
www.dol.gov/ebsa/pdf/1999pensionplanbulletin.pdf

_____. *Private Pension Plan Bulletin Historical Tables* (March 2007).
www.dol.gov/ebsa/pdf/privatepensionplanbulletinhistoricaltables.pdf

U.S. Department of Labor. Bureau of Labor Statistics. *Employee Benefits in Medium and Large Private Establishments, 1997* (1999). www.bls.gov/ncs/ebs/sp/ebbl0017.pdf

_____. *Employee Benefits in Medium and Large Private Establishments, 1995* (1998).
www.bls.gov/ncs/ebs/sp/ebbl0015.pdf

_____. *National Compensation Survey: Employee Benefits in Private Industry in the United States, 2005 Bulletin* (May 2007a). www.bls.gov/ncs/ebs/sp/ebbl0022.pdf

_____. *National Compensation Survey: Employee Benefits in Private Industry, March 2007 Summary* (August 2007b). www.bls.gov/ncs/ebs/sp/ebms0006.pdf

_____. *National Compensation Survey: Employee Benefits in Private Industry, March 2006 Summary* (2006). www.bls.gov/ncs/ebs/sp/ebms0004.pdf

_____. *National Compensation Survey: Employee Benefits in Private Industry, March 2005 Summary* (2005). www.bls.gov/ncs/ebs/sp/ebms0003.pdf

_____. *National Compensation Survey: Employee Benefits in Private Industry, 2000* (2003). www.bls.gov/ncs/ebs/sp/ebbl0019.pdf

VanDerhei, Jack. "Measuring Retirement Income Adequacy: Calculating Realistic Income Replacement Rates." *EBRI Issue Brief*, no. 297 (Employee Benefit Research Institute, September 2006).

VanDerhei, Jack, Sarah Holden, Craig Copeland, and Luis Alonso, "401(k) Plan Asset Allocation, Plan Balances, and Loan Activity in 2006," *EBRI Issue Brief*, no. 308 (Employee Benefit Research Institute, August 2007).

VanDerhei, Jack, and Craig Copeland. "Can America Afford Tomorrow's Retirees: Results From the EBRI-ERF Retirement Security Projection Model." *EBRI Issue Brief*, no. 263 (Employee Benefit Research Institute, November 2003).

_____. "The Changing Face of Private Retirement Plans." *EBRI Issue Brief*, no. 232 (Employee Benefit Research Institute, April 2001).

_____. "ERISA At 30: The Decline of Private-Sector Defined Benefit Promises and Annuity Payments? What Will It Mean?" *EBRI Issue Brief*, no. 269 (Employee Benefit Research Institute, May 2004).

Endnotes

¹ For families with one earner meeting the spousal benefit criteria, these replacement rates would increase by 50 percent, since the nonworking spouse could qualify for a benefit equal to 50 percent of the working spouse's benefit. Therefore, on a family basis for one-earner couples, the replacement rates would range from about 45 percent to 75 percent.

² Technically, most private qualified defined contribution plans are either money purchase or profit-sharing plans (Sec. 401(k) plans are of the latter type). Under the former, the plan sponsor typically commits to a fixed percentage of compensation each year. For a profit-sharing plan, plan contributions may be made on a discretionary basis by the plan sponsor, but how these contributions are allocated among individual employee accounts must be based on a specified, predetermined formula meeting certain requirements if the plan is to qualify for tax-favored status.

³ Employer contributions may be subject to vesting rules, such that participants do not have full legal rights to employer contributions made on their behalf until they have reached a certain minimum number of years of service. Consequently, if the participant terminates employment before reaching this minimum level of service, the benefit available would be reduced by the nonvested portion of the account balance.

⁴ Lump-sum distributions are increasingly available in DB plans. For example, in 2005, 52 percent of full-time employees in the private sector were eligible for a lump-sum distribution (Bureau of Labor Statistics, 2007a). In 1997 and 1995, 76 percent and 85 percent, respectively, of full-time workers participating in a DB plan in a medium or large establishment were *not* offered a lump-sum distribution (U.S. Department of Labor, 1999, 1998).

⁵ See VanDerhei and Copeland (April 2001).

⁶ See VanDerhei, Holden, Copeland, and Alsono (2007) for results on how current workers, in their present job, are doing in terms of accumulating assets in 401(k) plans. One important caveat of this study in regard to overall accumulations of workers in 401(k) plans is that the study does not include any assets accumulated at past jobs that have not been rolled into their current employment-based plan.

⁷ See VanDerhei and Copeland, *op. cit.*, for discussion of the reasons for the growth in DC plans and the consequences of this growth for retirees.

⁸ The 2004 Survey of Consumer Finances (SCF) was released in early 2006 with 2004 data. Therefore, the data are two years behind the CPS used in this study. However, SCF still remains the most updated survey of plan type breakouts as well as overall assets held by American households (among other things) and is an essential piece in the evaluation of the status of Americans' preparation for retirement.

⁹ Each March CPS asks about retirement plan participation in the prior year. For example, the March 2007 CPS asks about retirement plan participation in 2006.

¹⁰ Wage and salary workers include all workers who work for someone else as well as those who are self-employed and are incorporated. Thus, the unincorporated self-employed are not included.

¹¹ A worker who is at least 21 years of age, has one year of tenure, and works more than 2,000 hours in a year, in general, must be covered by an employer who offers a private-sector retirement plan to its workers (IRC Sec. 401(a) 26). Typically, public-sector employers follow similar rules, despite not being governed by all of the same statutes as those for private-sector employers.

¹² The industry definitions with the 2003 Current Population Survey were altered. Consequently, industry participation levels before 2002 cannot be compared with the more current years' results.

¹³ Starting with the 2003 March Current Population Survey, changes were made to the race questions allowing respondents to answer to more than one race, e.g., white and black. These individuals are included in the "other race" category. Thus, the white category only includes those who responded they were white only, blacks as black only, etc.

¹⁴ Native-born means the worker was born in the continental United States, Hawaii, or Alaska, but not U.S. territories such as Puerto Rico.

¹⁵ See VanDerhei (2006) for an examination of the risks of health care costs in retirement associated with the necessary amount of preretirement income needed to be replaced at retirement in order to maintain the same standard of living throughout retirement.

¹⁶ The relative percentages of retirement plan participation between those with and without own employer-provided health insurance has persisted for a number of years across all age groups. In 2004, 64.1 percent of all workers with health insurance through their own employer participated in an employment-based retirement plan, compared with 17.4 percent without this type of insurance (Copeland 2005a).

¹⁷ State estimates of the less populated states are less reliable than those of more populated states due to the sample size in the survey in those states. Consequently, these state estimates should be used with caution. Furthermore, due to the fairly significant standard error in the less populated states, in order to eliminate confusion between sampling errors and actual shifts in the participation levels across these states, trends are not presented.

¹⁸ As discussed earlier, the CPS is the most up-to-date and consistent survey of retirement plan participation among all employees with detailed demographic data. However, SIPP also has data on these issues. In Copeland (2005b), the percentage of workers participating in a retirement plan was found to have increased from 1998 to 2003, according to SIPP data. Furthermore, the level of participation was higher in SIPP than that in CPS. While the *level of difference* can be easily explained, as the SIPP study on retirement plan participation is focused only on those working at the time of the survey (compared with CPS, which asks individuals about retirement plan participation for anybody who worked in the past year, not just those currently working), the *trend differences* are not. One potential factor is that SIPP asks questions at the beginning of the year while CPS asks them at the end of the year, and the CPS showed a major increase in participation in 1998 that might not have been completely picked up by SIPP at the beginning of the year. Results from SIPP and CPS data have also provided differences in the percentage of individuals without health insurance that have not been completely explained other than by methodology issues. See Fronstin (2000) for a further discussion on the differences in these two surveys for counting the uninsured. In addition, the most recent SCF also shows a significant decline in the percentage of families with a worker who participates in an employment-based retirement plan (Copeland, 2006). In contrast, results from the Bureau of Labor Statistics (2003, 2005, 2006, and 2007a) show an increase in the percentage of private-sector workers participating in a retirement plan from 48 percent in 2000, 49 per-

cent in 2003, 50 percent in 2005, and to 51 percent in 2006 and 2007. However, the BLS survey is a survey of private establishments about their employees' participation, while CPS is a survey directly asked of households. Consequently, BLS survey does not provide the level of individual demographic data that the CPS does. Therefore, the CPS has the most up-to-date breakdowns of retirement plan participation by individual demographic data from the longest consistent set of annually asked questions on this topic. See Purcell (2006) for a further discussion on the differences from the BLS numbers in the National Compensation Survey and the CPS.

¹⁹ The race categories were revised in the 2003 survey to allow for combinations of races. However, the distribution of workers among the race categories was virtually unchanged even with those of more than one race being moved to the "other race" category. Consequently, the trend for the race/ethnicity categories is presented despite the inconsistent definitions of these categories.

²⁰ All earnings amounts are in 2006 dollars, that is, all earnings from years prior to 2006 are inflated by the consumer price index (CPI) level to reach 2006 dollars. Earnings are defined as the amount a worker is paid in compensation—wages and salary. This does not include investment income or other income sources.

²¹ The industry definitions with the 2003 Current Population Survey were altered. Consequently, industry participation levels before 2002 cannot be compared with the more current years' results.

²² While females have higher participation levels in each work status and earnings category, they have a lower likelihood of participating in a defined contribution plan when eligible. From the 2004 SCF, female family heads had a participation rate of 72.5 percent in DC plans compared to 76.6 percent for male family heads. Consequently, it appears that females are more likely to work for employers that offer a plan than are males.

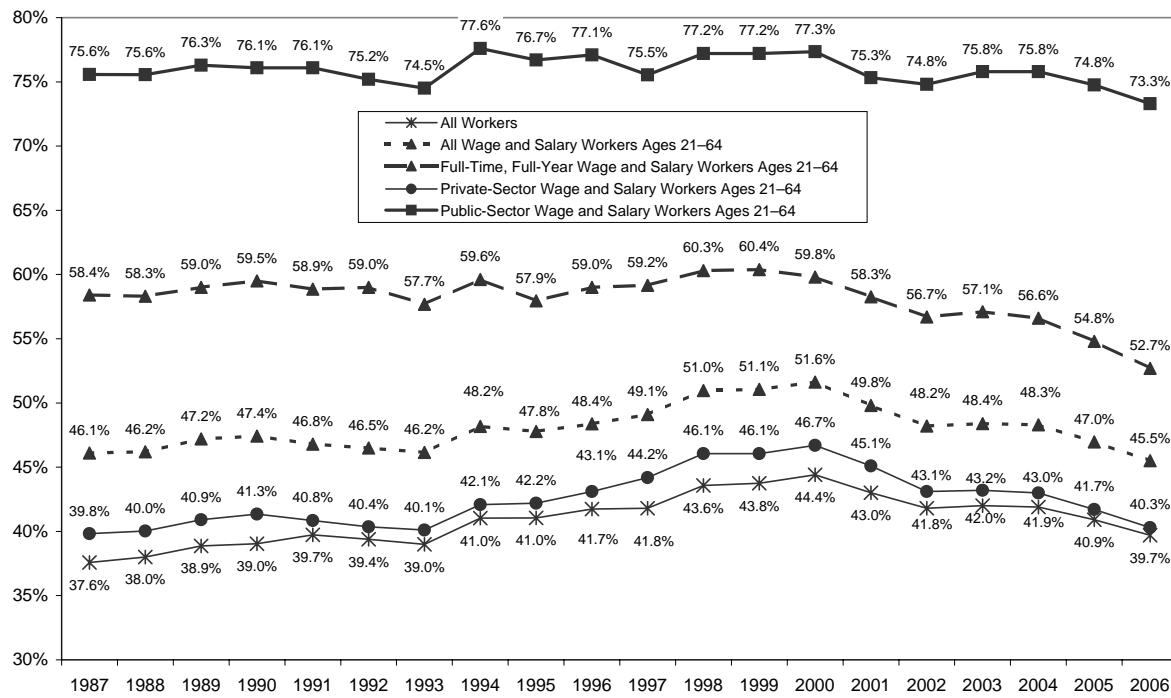
²³ See Holden and VanDerhei (2002) for projections of replacement rates from 401(k) plans for 401(k) plan participants under various career 401(k) plan participation scenarios to see the impact of how continuous participation in a plan substantially increases the replacement rate to be expected from these plans.

²⁴ See Holden and VanDerhei (2005) for an estimation of the possible impact on 401(k) plan account accumulations from automatic enrollment.

²⁵ These expenses include housing, food, apparel and services, transportation, reading and education, and entertainment plus basic health care costs such as Medicare premiums and Medigap premiums and stochastic health care expenditures for those who have a nursing home or health care episode of care. The level of these expenses is determined by the retiree's retirement income.

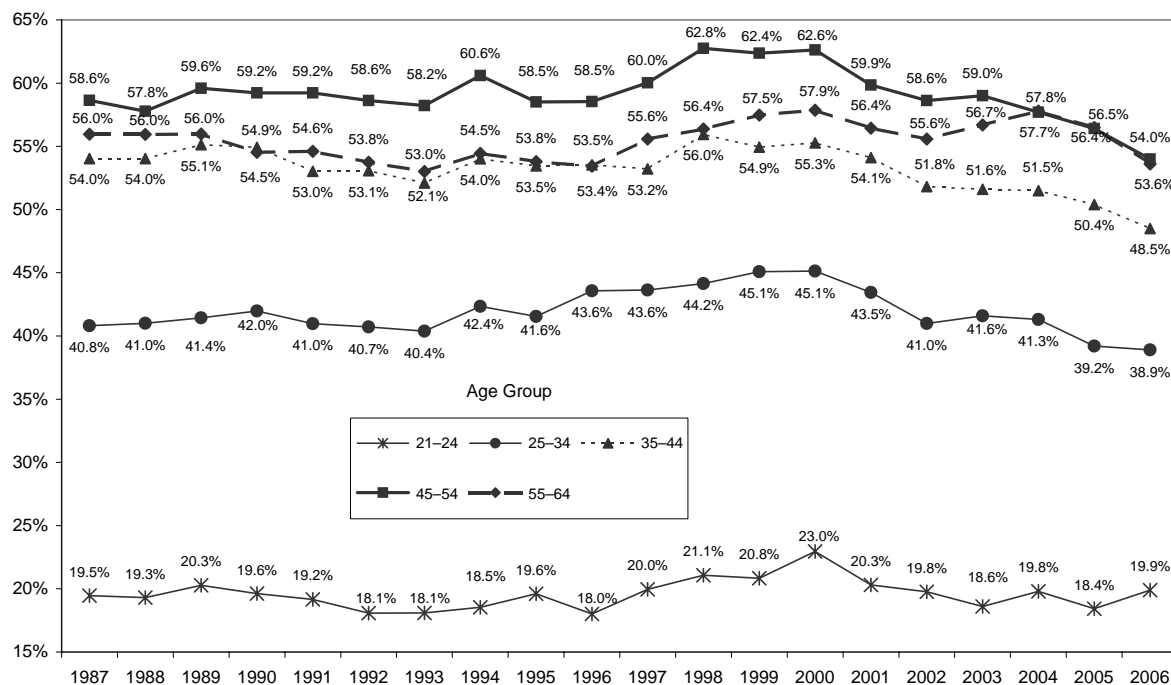
²⁶ See VanDerhei (2006) for a further discussion of the amount of income needed to be replaced, when accounting for various types of risk in retirement, and the probability of successfully accumulating sufficient assets to provide the necessary income.

Figure 18
Percentage of Various Work Forces Who Participated
in an Employment-Based Retirement Plan, 1987–2006



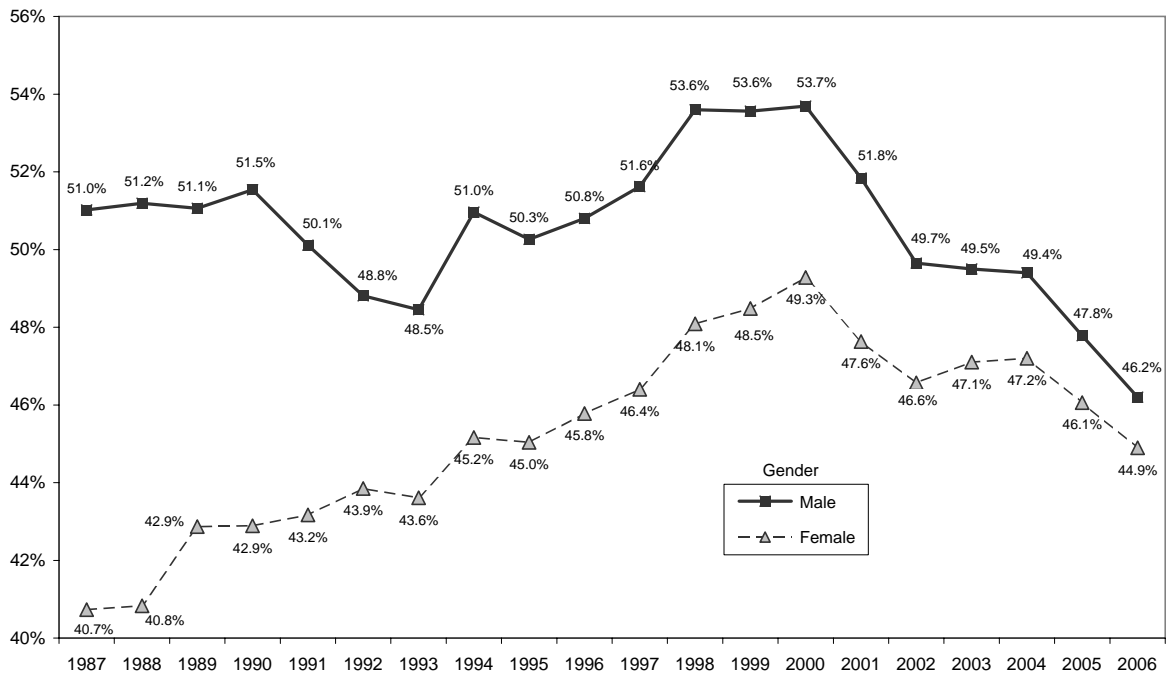
Source: Employee Benefit Research Institute estimates from the 1988–2007 March Current Population Surveys.

Figure 19
Percentage of Wage and Salary Workers Ages 21–64 Who Participated
in an Employment-Based Retirement Plan, by Age, 1987–2006



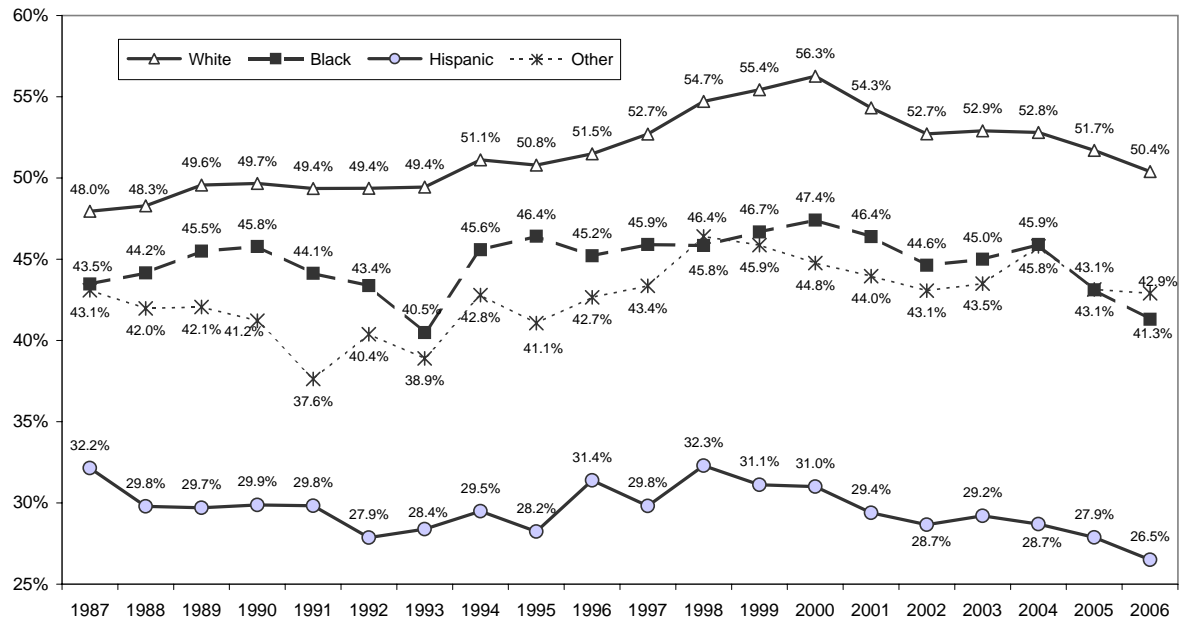
Source: Employee Benefit Research Institute estimates from the 1988–2007 March Current Population Surveys.

Figure 20
Percentage of Wage and Salary Workers Ages 21–64 Who Participated
in an Employment-Based Retirement Plan, by Gender, 1987–2006



Source: Employee Benefit Research Institute estimates from the 1988–2007 March Current Population Surveys.

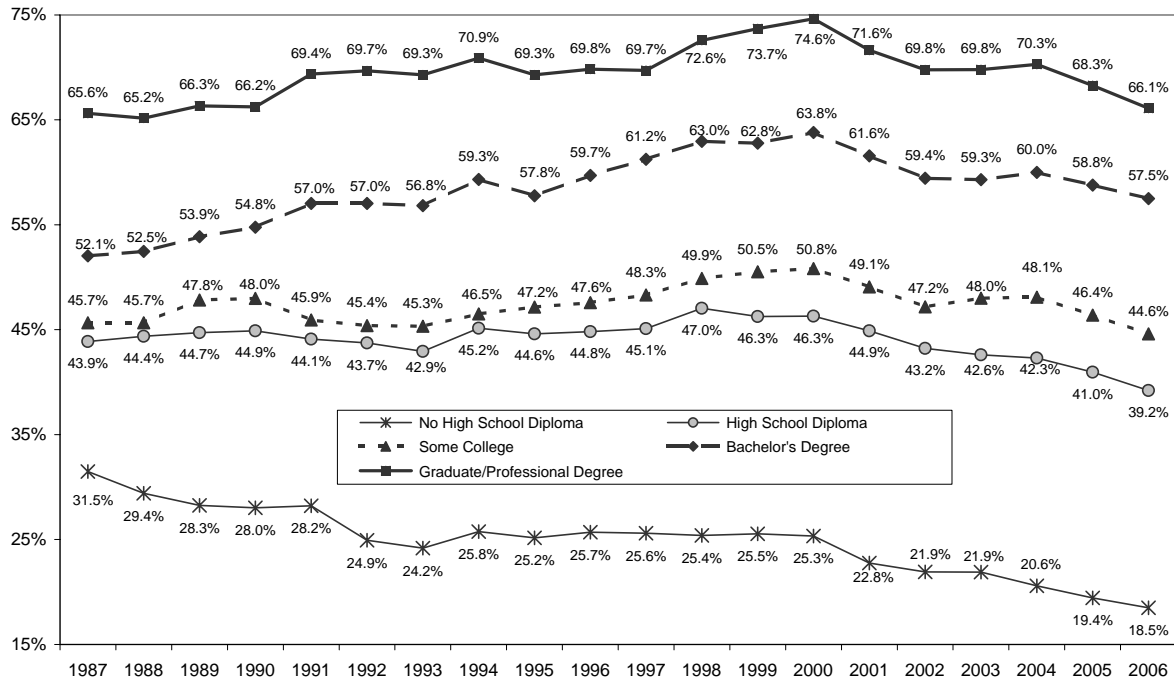
Figure 21
Percentage of Wage and Salary Workers Ages 21–64 Who Participated
in an Employment-Based Retirement Plan, by Race/Ethnicity,^a 1987–2006



Source: Employee Benefit Research Institute estimates from the 1988–2007 March Current Population Surveys.

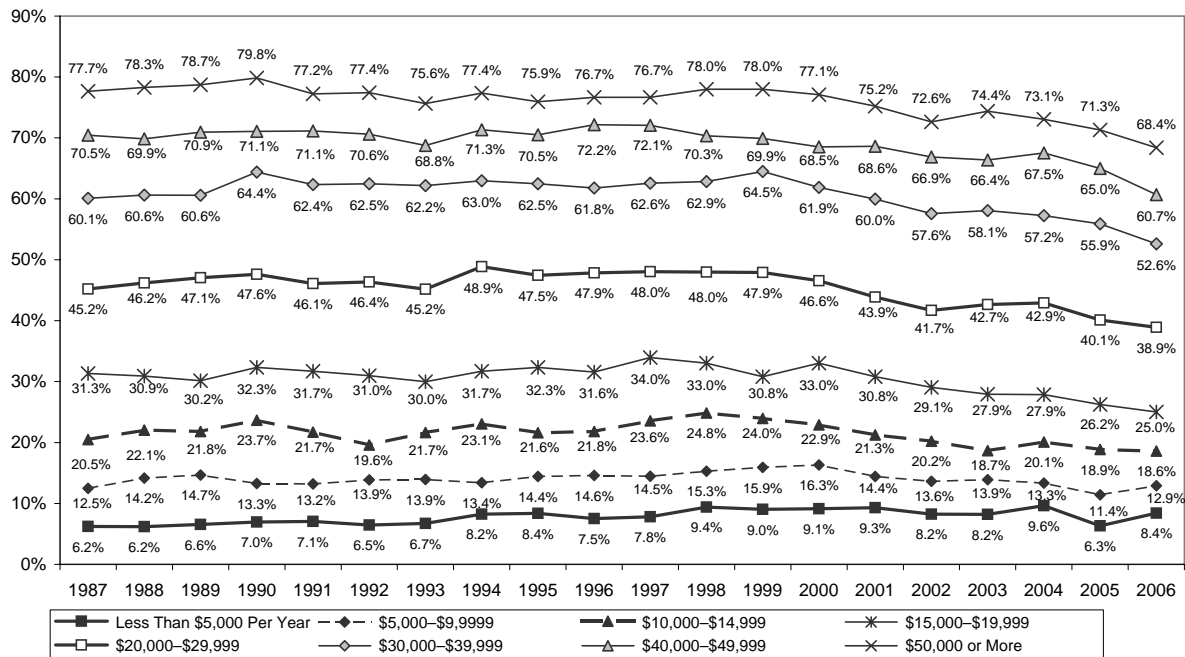
^a Beginning with the 2003 March Current Population Survey made changes to the race variable, where respondents were allowed to answer to more than one race. Thus, the 2002–2006 results are not entirely comparable with prior years, but are presented for illustrative purposes. The other category includes those that answered to being of more than one race for 2002–2006.

Figure 22
Percentage of Wage and Salary Workers Ages 21–64 Who Participated in an Employment-Based Retirement Plan, by Educational Level, 1987–2006



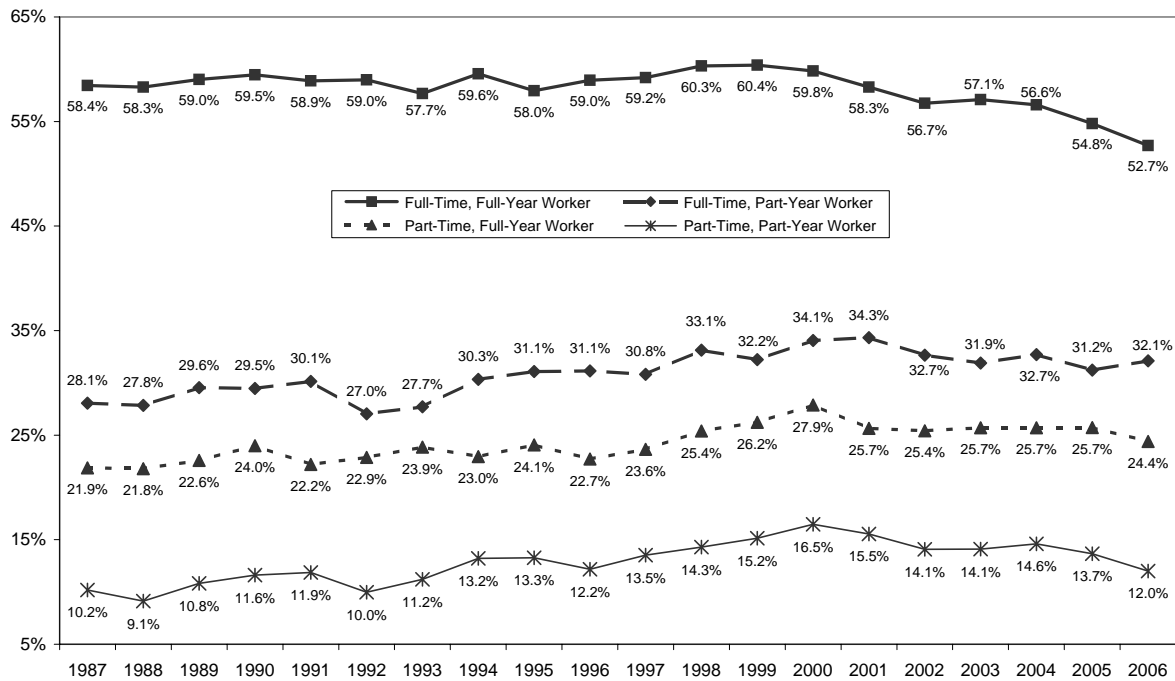
Source: Employee Benefit Research Institute estimates from the 1988–2007 March Current Population Surveys.

Figure 23
Percentage of Wage and Salary Workers Ages 21–64 Who Participated in an Employment-Based Retirement Plan, by Annual Earnings (2006 \$), 1987–2006



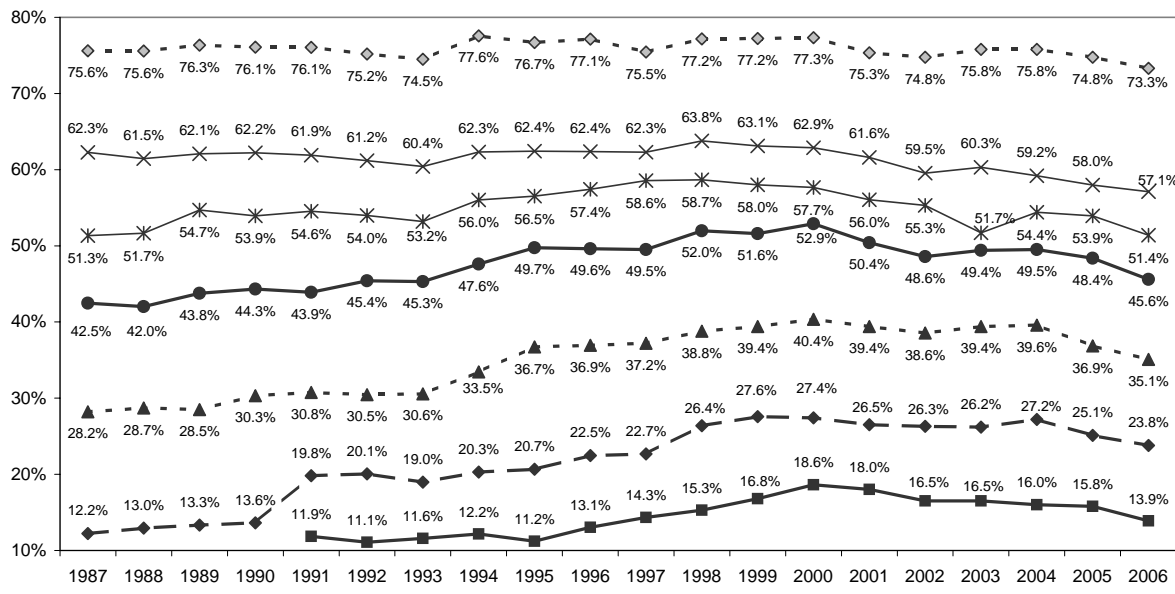
Source: Employee Benefit Research Institute estimates from the 1988–2007 March Current Population Surveys.

Figure 24
Percentage of Wage and Salary Workers Ages 21–64 Who Participated in an Employment-Based Retirement Plan, by Work Status, 1987–2006



Source: Employee Benefit Research Institute estimates from the 1988–2007 March Current Population Surveys.

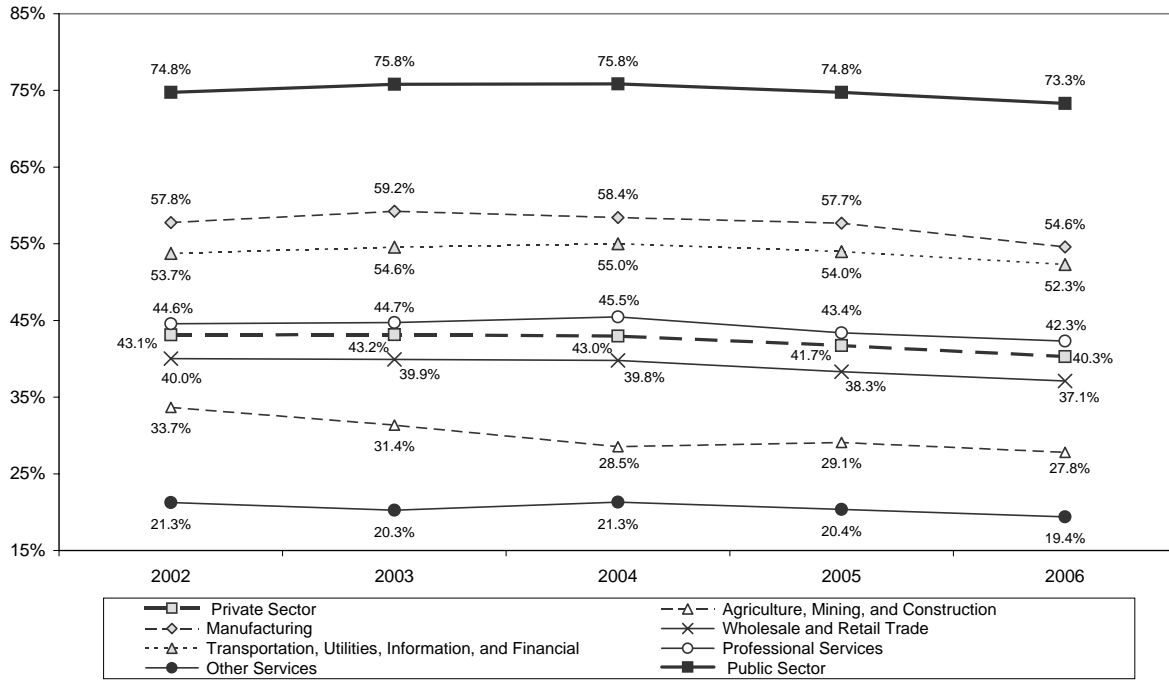
Figure 25
Percentage of Wage and Salary Workers Ages 21–64 Who Participated in an Employment-Based Retirement Plan, by Workers' Employer Size, 1987–2006



Source: Employee Benefit Research Institute estimates from the 1988–2007 March Current Population Surveys.

* Under 25 from 1987–1990

Figure 26
**Percentage of Wage and Salary Workers Ages 21–64 Who Participated in an
 Employment-Based Retirement Plan, by Industry/Sector, 2002–2006**



Source: Employee Benefit Research Institute estimates from the 2003–2007 March Current Population Surveys.
 Note: Industry classifications were changed in the 2003 Survey, so a consistent industry trend only goes from 2002–2006.

PUBLICATIONS

- > By Topic
- > Data Book
- > Facts from EBRI
- > Fast Facts
- > Fundamentals
- > Issue Briefs
- > Notes
- > Policy Books
- > Press Releases
- > Special Reports
- > Testimony
- > How to Subscribe

RESOURCES

- Benefit
- > Bibliography
- > Benefit FAQ
- > Links to Others
- > Reference Shelf
- Special Issues of
- > Periodicals
- What's New at
- > EBRI
- What's New in
- > Employee Benefits

CHECK OUT EBRI'S WEB SITE!

EBRI's Web site is easy to use and packed with useful information!

Look for these special features:

- EBRI's entire library of research publications starts at the main Web page. Click on *EBRI Issue Briefs* and *EBRI Notes* for our in-depth and nonpartisan periodicals.
- To get answers to many frequently asked questions about employee benefits, click on Benefit FAQs.
- EBRI's reliable health and retirement surveys are just a click away through the topic boxes at the top of the page.
- Instantly get e-mail notifications of the latest EBRI data, surveys, publications, and meetings and seminars by clicking on the Sign Up for Updates box at the top of our home page.

There's lots more!

Visit EBRI on-line today: www.ebri.org

EBRI Issue Brief

EBRI Employee Benefit Research Institute Issue Brief (ISSN 0887-137X) is published monthly by the Employee Benefit Research Institute, 1100 13th St. NW, Suite 878, Washington, DC, 20005-4051, at \$300 per year or is included as part of a membership subscription. Periodicals postage rate paid in Washington, DC, and additional mailing offices. POSTMASTER: Send address changes to: *EBRI Issue Brief*, 1100 13th St. NW, Suite 878, Washington, DC, 20005-4051. Copyright 2007 by Employee Benefit Research Institute. All rights reserved. No. 311.

Who we are

The Employee Benefit Research Institute (EBRI) was founded in 1978. Its mission is to contribute to, to encourage, and to enhance the development of sound employee benefit programs and sound public policy through objective research and education. EBRI is the only private, nonprofit, nonpartisan, Washington, DC-based organization committed exclusively to public policy research and education on economic security and employee benefit issues. EBRI's membership includes a cross-section of pension funds; businesses; trade associations; labor unions; health care providers and insurers; government organizations; and service firms.

What we do

EBRI's work advances knowledge and understanding of employee benefits and their importance to the nation's economy among policymakers, the news media, and the public. It does this by conducting and publishing policy research, analysis, and special reports on employee benefits issues; holding educational briefings for EBRI members, congressional and federal agency staff, and the news media; and sponsoring public opinion surveys on employee benefit issues. **EBRI's Education and Research Fund (EBRI-ERF)** performs the charitable, educational, and scientific functions of the Institute. EBRI-ERF is a tax-exempt organization supported by contributions and grants.

Our publications

EBRI Issue Brief is a periodical providing expert evaluations of employee benefit issues and trends, as well as critical analyses of employee benefit policies and proposals. *EBRI Notes* is a periodical providing current information on a variety of employee benefit topics. EBRI's *Pension Investment Report* provides detailed financial information on the universe of defined benefit, defined contribution, and 401(k) plans. EBRI *Fundamentals of Employee Benefit Programs* offers a straightforward, basic explanation of employee benefit programs in the private and public sectors. The *EBRI Databook on Employee Benefits* is a statistical reference work on employee benefit programs and work force-related issues.

Orders/ subscriptions

Contact EBRI Publications, (202) 659-0670; fax publication orders to (202) 775-6312. Subscriptions to *EBRI Issue Briefs* are included as part of EBRI membership, or as part of a \$199 annual subscription to *EBRI Notes* and *EBRI Issue Briefs*. Individual copies are available with prepayment for \$25 each (for printed copies) or for \$7.50 (as an e-mailed electronic file) by calling EBRI or from www.ebri.org. **Change of Address:** EBRI, 1100 13th St. NW, Suite 878, Washington, DC, 20005-4051; (202) 659-0670; fax number, (202) 775-6312; e-mail: subscriptions@ebri.org **Membership Information:** Inquiries regarding EBRI membership and/or contributions to EBRI-ERF should be directed to EBRI President/ASEC Chairman Dallas Salisbury at the above address, (202) 659-0670; e-mail: salisbury@ebri.org

Editorial Board: Dallas L. Salisbury, publisher; Steve Blakely, editor. Any views expressed in this publication and those of the authors should not be ascribed to the officers, trustees, members, or other sponsors of the Employee Benefit Research Institute, the EBRI Education and Research Fund, or their staffs. Nothing herein is to be construed as an attempt to aid or hinder the adoption of any pending legislation, regulation, or interpretative rule, or as legal, accounting, actuarial, or other such professional advice.

EBRI Issue Brief is registered in the U.S. Patent and Trademark Office. ISSN: 0887-137X/90 0887-137X/90 \$.50+\$.50

Did you read this as a pass-along? Stay ahead of employee benefit issues with your own subscription to *EBRI Issue Brief* for only \$89/year electronically e-mailed to you or \$199/year printed and mailed. For more information about subscriptions, visit our Web site at www.ebri.org or complete the form below and return it to EBRI.

Name _____

Organization _____

Address _____

City/State/ZIP _____

Mail to: EBRI, 1100 13th St. NW, Suite 878, Washington, DC, 20005-4051 or Fax to: (202) 775-6312